

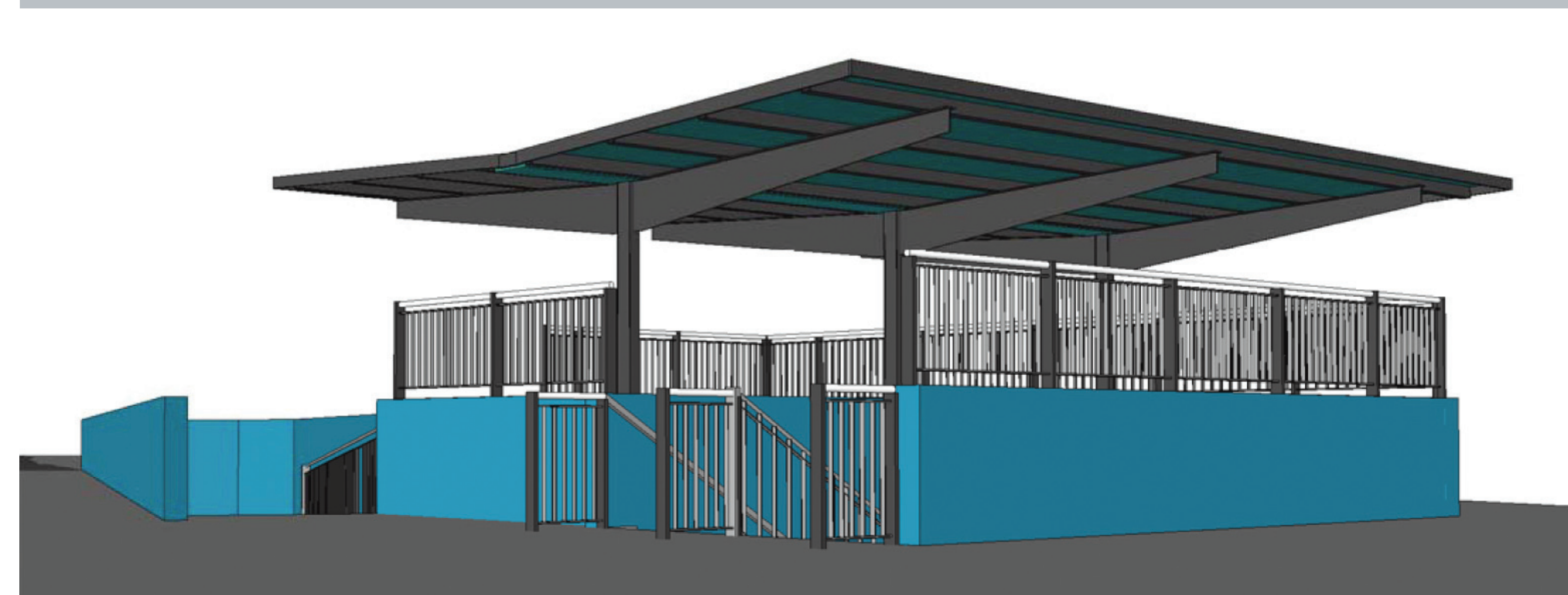
Wellington Region Rail Programme



Improving Paraparaumu Station

From May 2010 Paraparaumu Station will be under construction for up to 7 months.

For your safety, please keep clear of the construction zones and use the designated pedestrian access ways.



When complete there will be:

- A second platform
- A new underpass, replacing the overbridge
- A small station building on the new platform
- Small changes to the station carpark.

The station will remain open throughout construction although parts of the platform and carpark will be blocked off at times.

KiwiRail and Greater Wellington Regional Council would like to thank all customers for their patience during the construction period.

KiwiRail

**greater WELLINGTON
REGIONAL COUNCIL**

STAGE 1: Set up construction zones

The subway will remain open, but you'll need to use the ramps while we close the stairs for a while. Your train will stop slightly further south on the platform. We'll use some carparks during construction but temporary parks will be available off Epiha Street.

STAGE 2: Build new platform

We will start building the southern end of the new platform, moving gradually north. A small number of carparks will be out of action while we are building near by.

STAGE 3: Complete platform and subway

The footbridge will be demolished once the subway opens.

STAGE 4: Construct new station building

The building will have a waiting room, ticket office, toilets and a coffee shop.

STAGE 5: Finishing details

We'll make small changes to improve the flow of carpark traffic and do the final work on the new platform before it opens for service in early 2011.

