

## ELLERSLIE BRIDGE WORKS

April 2025

### Dear neighbour,

KiwiRail will be undertaking work on the rail bridge above Mitchelson Road in Ellerslie from Friday 18 April to Friday 25 April between the hours of 6:30am and 6pm.

This work will be done during the day and a full daytime road closure will be in place on Mitchelson Road throughout the duration of the works.

Thank you for your on-going patience as we continue to undertake maintenance and upgrade works on the rail tracks near your property.

---

### What we are doing:

Teams will be carrying out re-sleeper works on the rail bridge above Mitchelson Road.

Teams will use a digger to lift the rails and take out the old sleepers, they will then install new sleepers and place the rail back. The tamper will then need to travel through this section to tamp everything into place.

Teams will complete this work between 6:30am-6pm from Friday 18 April to Friday 25 April.

### How this affects you:

There will be noise from heavy machinery and vehicles moving around and along the rail corridor. There will also be a full daytime road closure on Mitchelson Road throughout the duration of works so please ensure you obey all Traffic Management signs and personnel.

Teams will need to access the rail corridor via Hudson Street so please be mindful of this when in the area.

Our staff are mindful of our rail neighbours and will work hard to minimise any disturbance to get this essential work done as quickly and quietly as possible. However, despite their best efforts, this work may cause you some disturbance from machinery and vehicles moving on site. We apologise for any inconvenience in relation to the traffic detour and our work.

Please see map on the reverse to show where the work will be taking place.

### Upcoming Dates

Friday 18 April – Friday 25 April

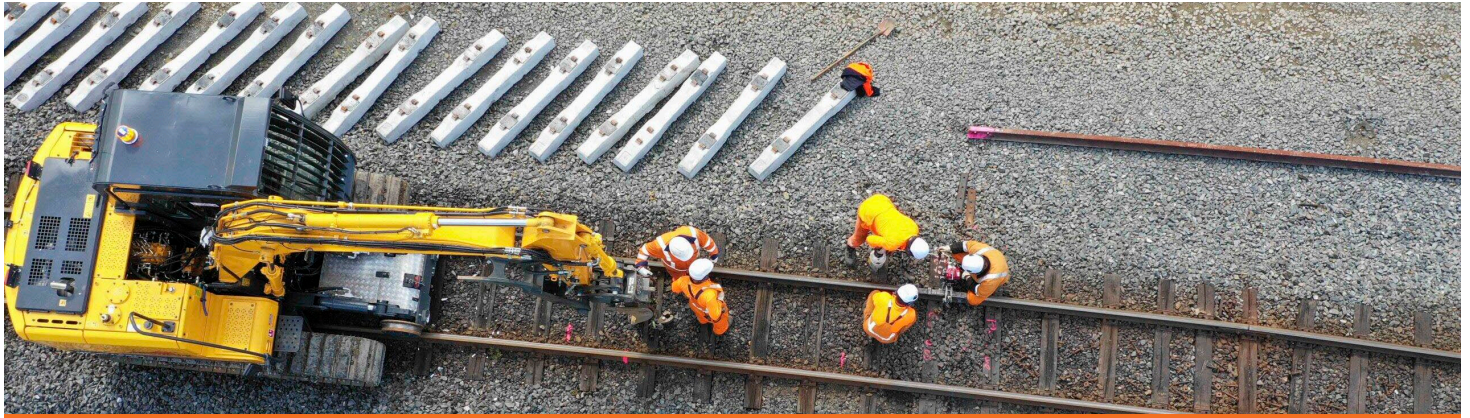
**Construction works and full  
daytime road closure:  
6:30am – 6pm**

---

### Find out more

If you have any queries about this work, contact our Community Engagement Team via **contactus@kiwirail.co.nz** or **0800 801 070 ext 43042**.

To receive future work notifications by email, please email us at the above address with your details.

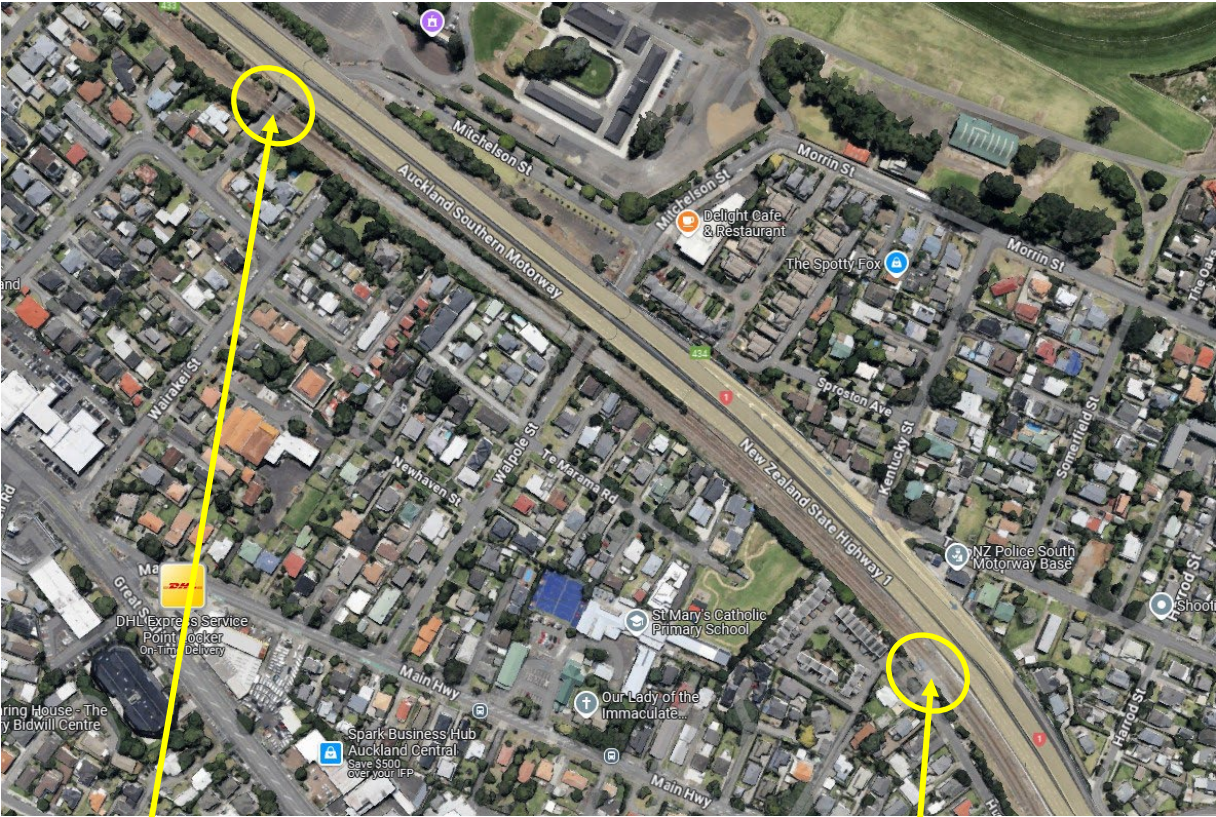


# ELLERSLIE BRIDGE WORKS

April 2025

## Worksite:

Large vehicles such as diggers and hi-rail vehicles will be required to operate during the day and will travel along the rail corridor from Hudson Street to access the work site.



Worksite

Access point