

STAY OFF STAY SAFE

TRACKS ARE FOR TRAINS

**Rail
Safety
Week**

TrackSAFE
Foundation

KiwiRail 

Stay Off Stay Safe: Rail Safety Week Campaign Overview

The *Stay Off Stay Safe* campaign aims to raise awareness of the critical safety risks associated with trespassing in the rail corridor.

We want to remind everyone that railway tracks and surrounding areas are dangerous, high-risk environments where unauthorized access can have tragic consequences.

Through this campaign, we emphasize the importance of using only designated railway crossings and staying clear of railway tracks, bridges, tunnels and yards to prevent fatalities and life-changing incidents.

Why this campaign matters

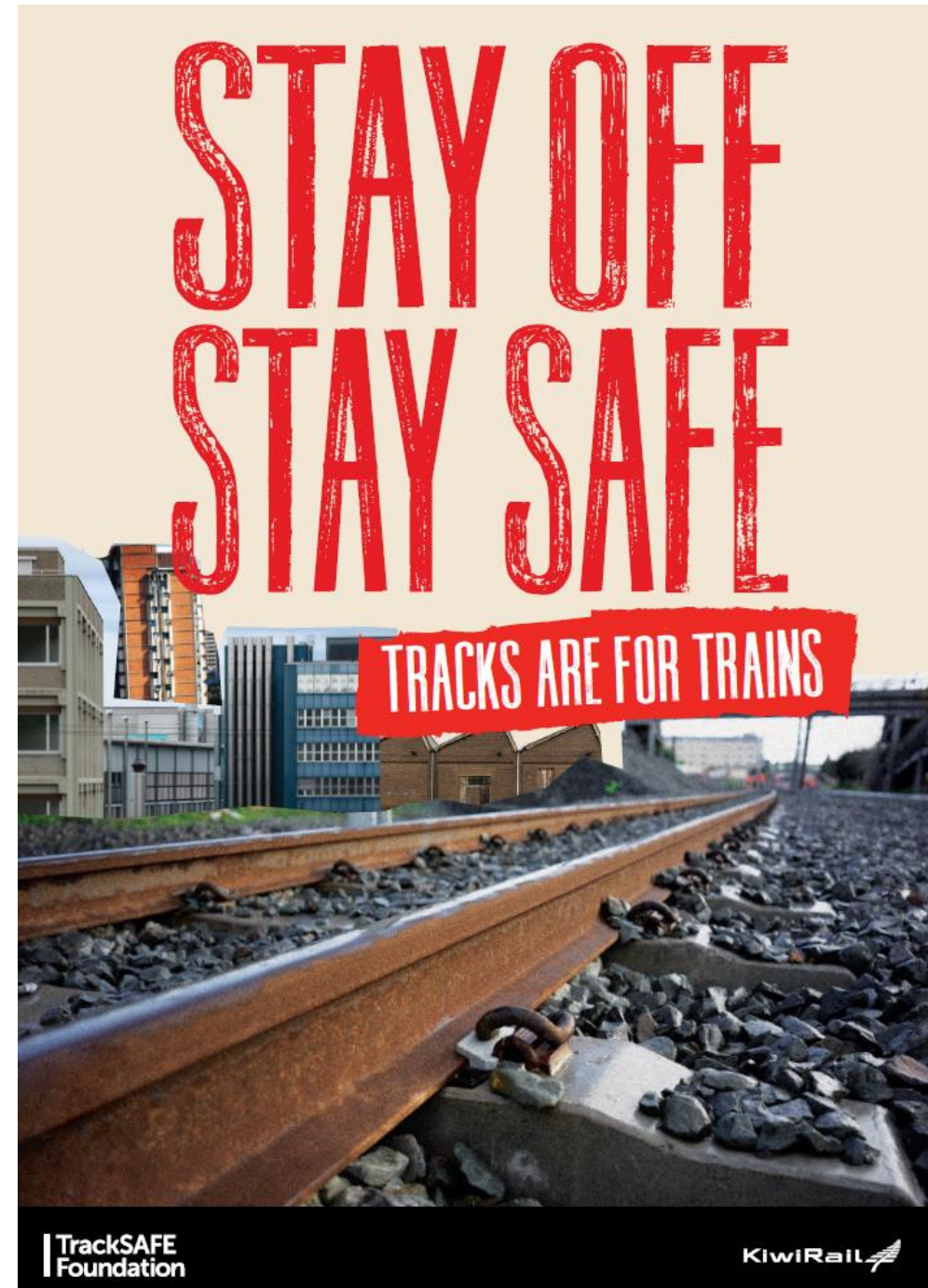
Trespassing on railway tracks is not a minor risk—every moment spent in the rail corridor is highly unsafe.

The *Stay Off Stay Safe* campaign calls on all New Zealanders to understand that railways are not places for shortcuts or exploration.

It's about making a simple decision to stay safe and ensure that railways remain the safe, efficient transport networks we all rely on.

How everyone can play a part

- Stay off the tracks. The rail corridor is not for walking, playing, or taking short cuts.
- Use only designated railway level crossings. They are the safest, legal way to cross railway tracks.
- Respect the law. Trespassing on railway property is illegal and dangerous.
- Prevent harm. Be aware of the devastating impact trespassing can have on individuals, families, and communities.
- Together, we can reduce the number of incidents and save lives by making safer choices around railways.
- Stay Off Stay Safe. Tracks are for trains.



Safety Messages

The only safe crossing is at a designated railway level crossing

These crossings are specifically designed to ensure the safety of pedestrians, cyclists, and vehicles. Before crossing, always look both ways to ensure no trains are approaching. Never assume it's safe to cross just because a train is not in sight—trains can appear suddenly, and travel faster than you expect.

The rail corridor is not a public walkway

The rail corridor is not meant for casual use. It's a highly dangerous environment, with moving trains that can travel at high speeds. The area, which typically extends five meters on either side of the tracks, as well as railway bridges, tunnels, and yards, is off-limits to the public.

The dangers are real

Since 2012, 185 lives have been lost in the rail corridor in New Zealand. Last year alone, KiwiRail recorded 642 trespassing incidents, with approximately 60 near misses involving pedestrians. These numbers highlight the continuing, serious risks posed by unauthorized access to the rail network.

Trespassing is illegal and risky

Walking on or alongside railway tracks, or entering railway yards, bridges, or tunnels is illegal under the Railways Act 2005. Trespassing in the rail corridor is not only dangerous, but you can also be prosecuted. This law exists to protect lives and prevent avoidable injuries and fatalities.

A widespread issue

Recent research commissioned by TrackSAFE shows that almost half of surveyed individuals admitted to walking on or across railway tracks. Despite the risks, trespassing remains a persistent issue in New Zealand and around the world, making awareness and education critical in changing behaviour.

The impact on locomotive engineers (train drivers) and railway staff

Locomotive engineers (train drivers) and railway staff who witness or are affected by these incidents sometimes face long-term emotional trauma. Witnesses and first responders can also be profoundly affected. Preventing harm means protecting the wellbeing of all these people too.

Press release:

A media statement will be available on Monday 11 August at this link: [News | KiwiRail](#)

Digital resources for download

[A3 Poster – Urban](#)

[A3 Poster – Rural](#)

[Social media square – urban](#)

[Social media square –rural](#)

[Facebook cover photo- urban](#)

[Facebook cover photo – rural](#)

[Website cover – urban](#)

[Website cover – rural](#)

[DL flier – urban](#)

[DL flier- rural](#)

[A3 bilingual - rural](#)

[A3 bilingual - urban](#)

[Teams background - urban](#)

[Teams background – rural](#)

[Email signature](#)

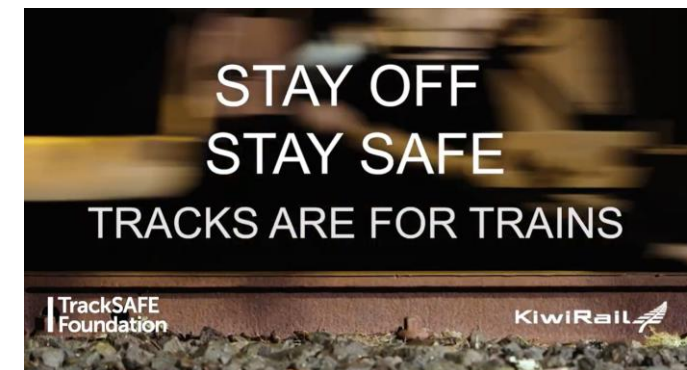
All resources are also available on KiwiRail website: [Rail Safety Week | KiwiRail](#)

YouTube video -

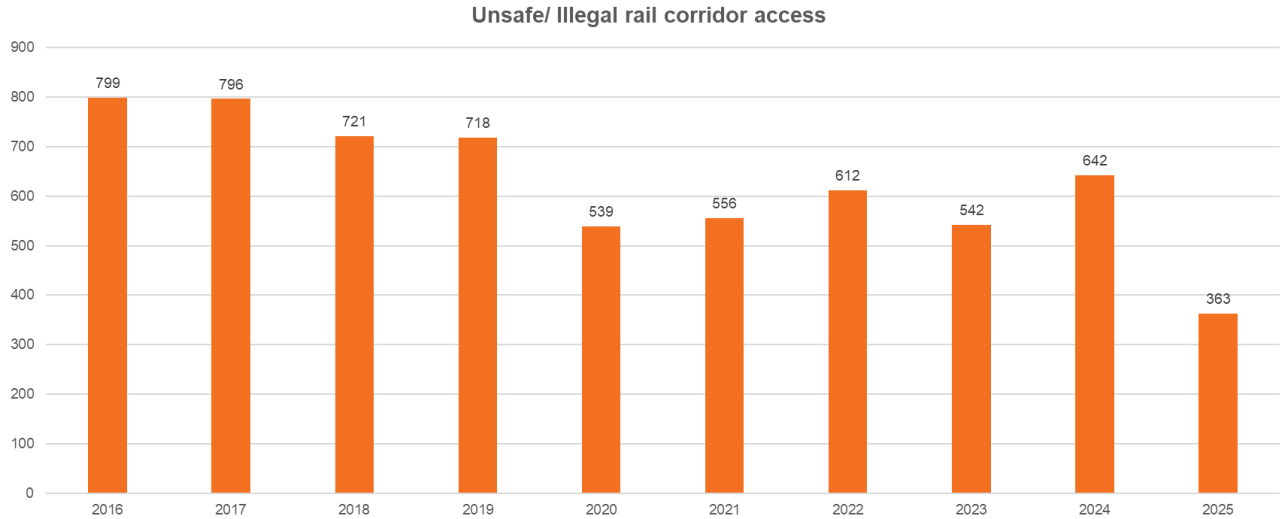
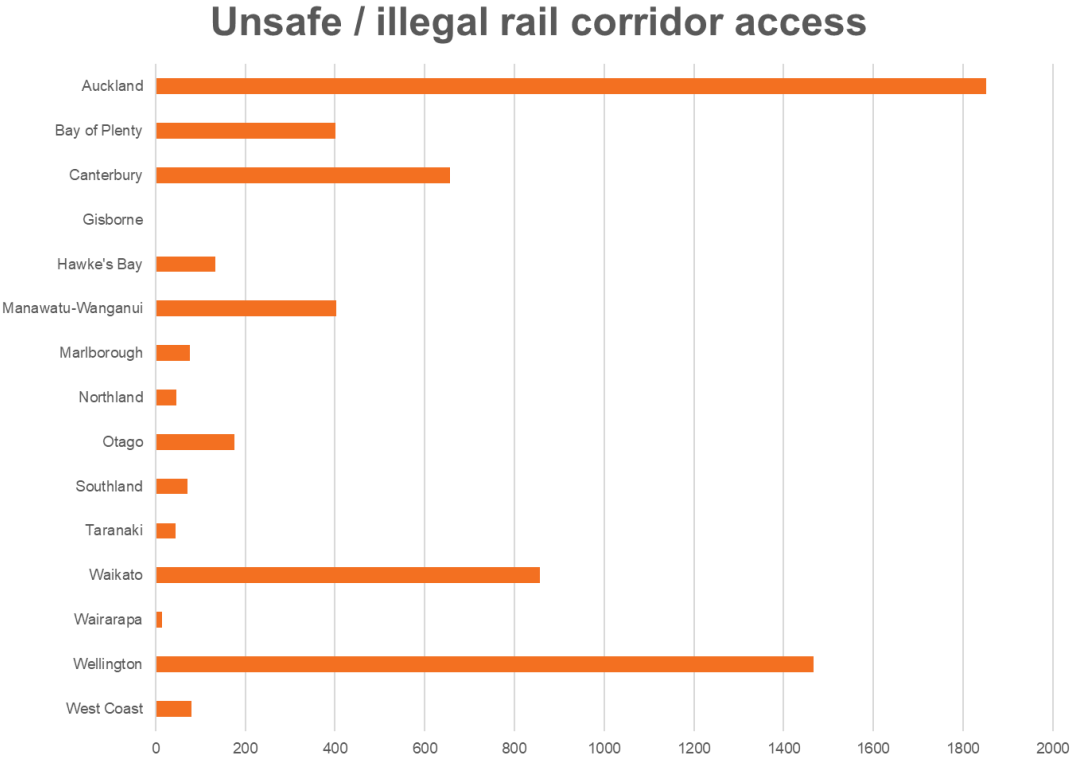
<https://youtu.be/Zv uJPoqJV64>

Hashtags:

#stayoffstaysafe #tracksarefortrains
#railsafetyweek #RSW2025



Data and research



Behaviour around railway tracks

- Forty-five percent of respondents state they have walked on or across railway tracks but not at a level crossing, 47% said they have not and 7% are unsure.
 - Those more likely to have walked or crossed the tracks but not at a level crossing are males, those living in rural or provincial New Zealand, NZ Europeans, and NZ Māori.
- Those who have walked on or across the railway tracks but not at a level crossing mainly did so as it is quicker or as no other crossing was nearby. Some also mentioned they thought it wasn't dangerous, or that others do it.

NZ Transport Agency Waka Kotahi – new graphic novel for Years 7-8

Home › Teacher resources › School community partnerships ›

Rail safety interactive graphic novel



Support school students to explore safe choices when walking or cycling near trains and railway tracks.

Published 2025

Fast Tracks, Smart Moves is aimed at Year 7-8 students. This resource explores rail safety through the illustrated story of three school students who walk and ride around their neighbourhood.

School community partnerships

Road safety advice for families

Kerb drill and driveway videos and songs

Rail safety interactive graphic novel

Rail safety song

Rail safety presentation and activities

How students can design road safety campaigns

Car park safety for schools (with ninja video)

Scooter safety tips

Skateboard and bike tips

School travel plans

Walking school bus

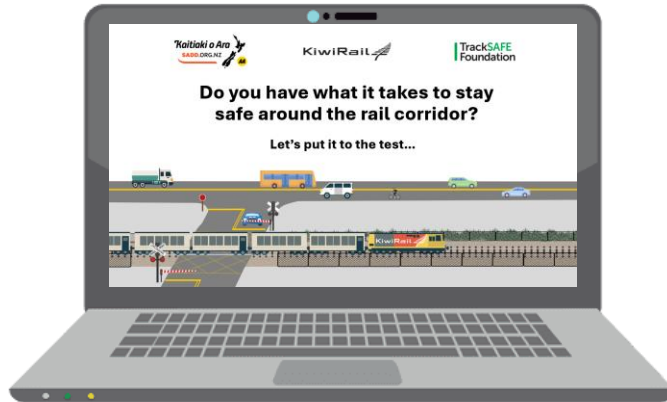


NZTA Waka Kotahi Education portal -[Rail safety interactive graphic novel](#) | [Education Portal](#)

New resources for secondary school students

‘Pick your pathway’

Interactive rail safety game

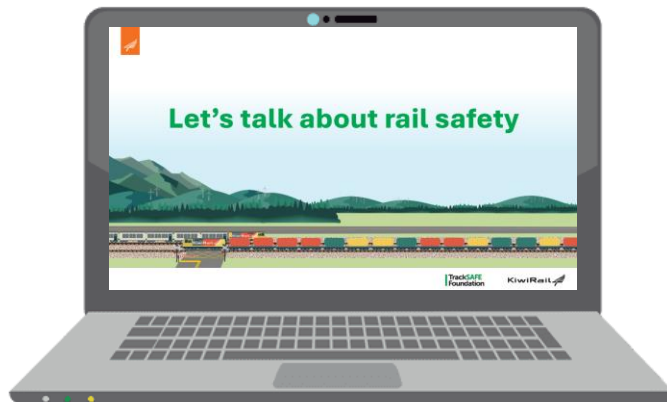


- New resources for secondary schools have been developed in collaboration with KiwiRail, TrackSAFE and Kaitiaki o Ara/Students Against Dangerous Driving (SADD).
- Resources can be found on the SADD [rail safety](https://www.tracksafe.co.nz/safety/schools/rail-safety-for-secondary-school-students) page. There is also information about new awards on the TrackSAFE website.

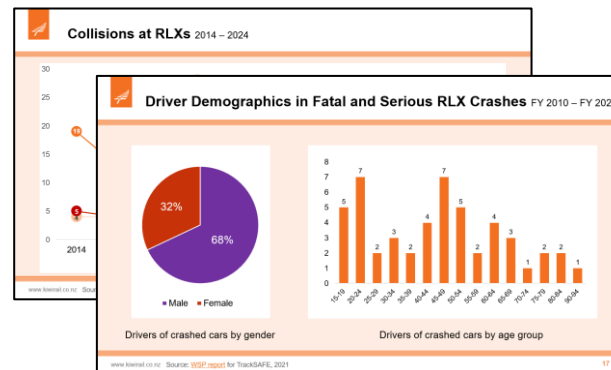
<https://www.tracksafe.co.nz/safety/schools/rail-safety-for-secondary-school-students>

<https://www.tracksafe.co.nz/safety/safety-awards/community-rail-safety-awards>

Rail safety presentation for secondary students



Railway Level Crossings Stats & Facts



Ideas for incorporating rail safety into SADD activities

Believe it or not

How to run 'Believe it or not':

1. Write a list of questions with only two answers.
2. Choose a topic.
3. Explain the rules.
4. Last person to answer correctly wins.

Example Questions

- Q: The maximum fine for trespassing in the rail corridor.

What's next?

How to run 'What's next?':

1. Print out a photo related to driving around railway crossings.
2. Display it with the following questions:
 - a) What do you see?
 - b) What do you think is happening?
 - c) What might happen next?
3. Have students write their answers on post-it notes and stick them under each question.

Tip: Make sure students aren't too close to the rail corridor.

Aim: To make students think about the implications and consequences of their choices.

Tips: This works best in a classroom situation or with lots of people.

Example Photos

[Link to SADD YouTube video](#) [Link to activity online](#)