

24/7 HOBSON BAY BRIDGE WORKS

April 2025

Dear neighbour,

KiwiRail will be undertaking 24/7 work on the Hobson Bay rail bridge in Ōrākei from Saturday 12 April to Friday 18 April.

This work can only be undertaken when there are no passenger trains running. This means a lot of our access time is limited to nights, weekends, and public holidays while the network is closed to passenger trains.

Thank you for your on-going patience as we continue to undertake maintenance and upgrade works on the rail tracks near your property.

Upcoming Dates

Saturday 12 April – Friday 18 April

**Construction works:
24/7**

What we are doing:

KiwiRail has been gathering and assessing noise data over the past few months. As we continue to monitor this, we are observing patterns that indicate high noise levels coming from the Hobson Bay rail bridge.

During the Easter rail shutdown, our teams will proactively replace some of the fittings and plates on the track in this section, with the hope that this will further reduce noise. We will continue to monitor noise levels after these changes to assess their impact.

We will also be replacing existing rail. This will be intensive work involving rail grinding, cutting and welding.

Teams will be cutting and removing existing rail, replacing it with new rail and finally welding the new rail together and grinding it to the correct shape.

Much of the noisy work needs to be done at night, when the temperatures are cooler, and we apologise in advance for the disruption.

Teams will complete this work from Saturday 12 April to Friday 18 April. Work will be 24/7 throughout this period.

How this affects you:

There will be noise from heavy machinery and vehicles moving around and along the rail corridor, as well as bright lights and teams working in the area.

Teams will need to access the rail corridor via Purewa Road so please be mindful of this when in the area.

Our staff are mindful of our rail neighbours and will work hard to minimise any disturbance to get this essential work done as quickly and quietly as possible. However, despite their best efforts, this work may cause you some disturbance from machinery and vehicles moving on site. We apologise for any inconvenience in relation to the traffic detour and our work.

Please see map on the reverse to show where the work will be taking place.

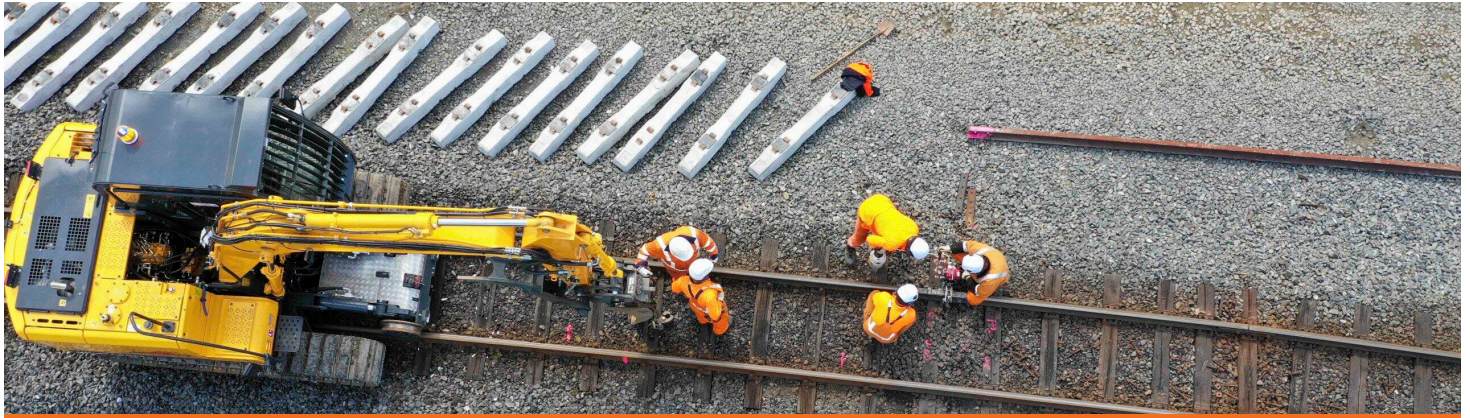
Find out more

If you have any queries about this work, contact our Community Engagement Team via **contactus@kiwirail.co.nz** or **0800 801 070 ext 43042**.

To receive future work notifications by email, please email us at the above address with your details.

Thanks for your patience while we carry out this important work - The KiwiRail team.
contactus@kiwirail.co.nz or 0800 801 070 ext 43042

KiwiRail 



24/7 HOBSON BAY BRIDGE WORKS

April 2025

Worksite:

Large vehicles such as diggers and hi-rail vehicles will be required to operate during the day and night and will travel along the rail corridor from Purewa Road to access the work site.



Worksite

Access point

Thanks for your patience while we carry out this important work - The KiwiRail team.
contactus@kiwirail.co.nz or 0800 801 070 ext 43042

KiwiRail 