



# Rail Network Rebuild

## MANUREWA 24/7 RAIL CONSTRUCTION WORKS

November 2025

Dear neighbour,

KiwiRail is rebuilding the rail network in your area to make train travel more resilient and reliable and to prepare for the more frequent trains the City Rail Link (CRL) will bring when it opens next year. We are progressing a major upgrade of our rail network in South Auckland, including Manurewa.

**During the four-week summer rail upgrade** (see dates right), **KiwiRail will complete the installation of a new turnout track structure and overhead electric lines in Manurewa, near your property. Some of these works will happen day and night** so we can complete them as quickly as possible.

There will be a full Auckland rail network closure between 27 December and 18 January. From 19-26 January, there will be no trains on the Southern Line south of Manukau. Testing of the new City Rail Link timetable means the entire network will be closed again on 27-28 January 2026. Check before you travel by train at [govt.nz/railclosures](https://www.govt.nz/railclosures)

The works are part of the Rail Network Rebuild programme to prepare Auckland's rail network for increased services, shorter journeys, and more frequent trains as part of the CRL.

### What we are doing:

We are undertaking major track works in your area. This work can generally only be done during extended periods when no or reduced numbers of commuter trains are running.

The work will involve physically lifting and then tamping the track and new turnout track structure, which allows trains to switch tracks, to the final design alignment. Our teams will also install overhead electric lines to power the new track structure.

This will be put in place in the rail corridor as marked in the map (overleaf). For part of this work, we will use an elevated work platform (EWP, or crane) to allow our team to safely work at the required height. The EWP may overlook some nearby properties for a short period of time.

We will also install new overhead masts and contact wires, which power the electric trains using the turnout to switch tracks.

### Upcoming dates

24/7 construction works to upgrade Manurewa rail infrastructure:

- **27 December to 18 January 2026:** construction works underway
- **27-28 January:** City Rail Link timetable testing – no rail passenger services

At times temporary traffic management will be required – please follow the signs.

### Find out more

If you have any queries about our work, contact our Community Engagement Team via [contactus@kiwirail.co.nz](mailto:contactus@kiwirail.co.nz) or 0800 801 070 ext 43042

To find out about your public transport options during the Rail Network Rebuild visit [www.at.govt.nz](https://www.at.govt.nz) or call 09 366 6400.



## ABOUT THE CONSTRUCTION SITE

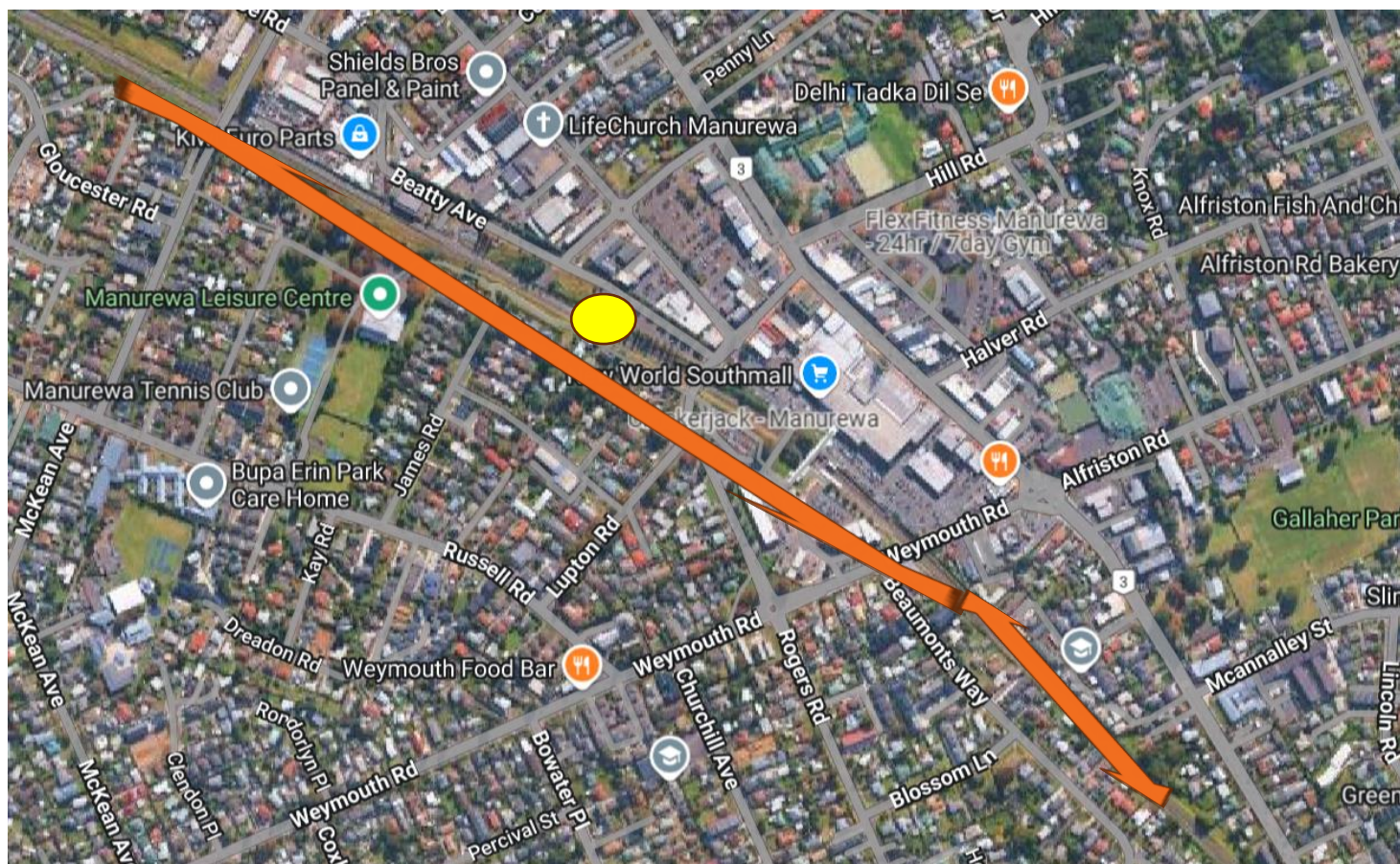
### How this affects you:

There will be noise from machinery and heavy vehicles moving around as well as bright lights and KiwiRail teams in the area.

Our staff are mindful of our neighbours and will work to minimise any disturbance. Wherever possible staff will aim to carry out noisier works during the day. However, despite their efforts this work may cause you some disturbance and we apologise in advance for this.

We will be using part of the parking area behind **City Fitness, 6 Maich Road, Manurewa** to store equipment including the crane. Traffic management will be in place, so please take extra care when in the area.

The overhead electric lines will be installed in the rail corridor as marked with the orange line on the map below. Our team will access the work site via the car park, behind City Fitness, marked with the yellow circle.



Thanks for your patience while we carry out this important work - The KiwiRail team.  
contactus@kiwirail.co.nz or 0800 801 070 ext 43042