

Rail Network Rebuild

MORNINGSIDE RAIL WORKS: 24/7 CONSTRUCTION

November 2025

Dear neighbour,

KiwiRail is rebuilding the rail network in your area to make train travel more resilient and reliable and to prepare for the more frequent trains the City Rail Link (CRL) will bring when it opens next year. We are continuing a major upgrade of our rail network including around Morningside train station.

During the four-week summer rail upgrade (see dates right), **KiwiRail will make track and signals improvements and upgrade foundations under the rails in the rail corridor near your property. Some of these works will happen day and night** so we can complete them as quickly as possible. We will use rail land near Morningside Station as access points for vehicles needed for this work.

We will be installing a double slip, which is a track junction allowing trains to switch from a converging track to either of four different tracks. As this is a large and complex piece of work, it can only be undertaken when there are no passenger trains running.

There will be a full Auckland rail network closure between 27 December and 18 January. From 19-26 January, there will be no passenger trains running on the Western Line. Testing of the new City Rail Link timetable means the entire network will be closed again on 27-28 January 2026. Check before you travel by train at govt.nz/railclosures

The Rail Network Rebuild (RNR) replaces aging foundations under the tracks and upgrades drainage to make them more resilient to weather events. The work allows trains to be more reliable and helps get the network ready for the CRL.

What we are doing:

RNR will improve reliability, allow more frequent trains and improve the ride for passengers. The work involves the following steps:

- Cutting and removing existing track and sleepers
- Digging up and rebuilding foundations, excavating and replacing ballast
- Laying tracks and sleepers, connecting, re-aligning and balancing tracks.

KiwiRail will use this opportunity to undertake other renewal and enabling works to ensure the safety and reliability of the Auckland rail network.

Upcoming dates

- **30 December to 17 January 2026:** 24/7 construction works underway
- **27-28 January:** City Rail Link timetable testing – no rail passenger services

Find out more

For enquiries and to sign up to work notifications by email please contact us via

contactus@kiwirail.co.nz or 0800 801 070 ext 43042.

Visit our website:
kiwirail.co.nz/aklrailrebuild.

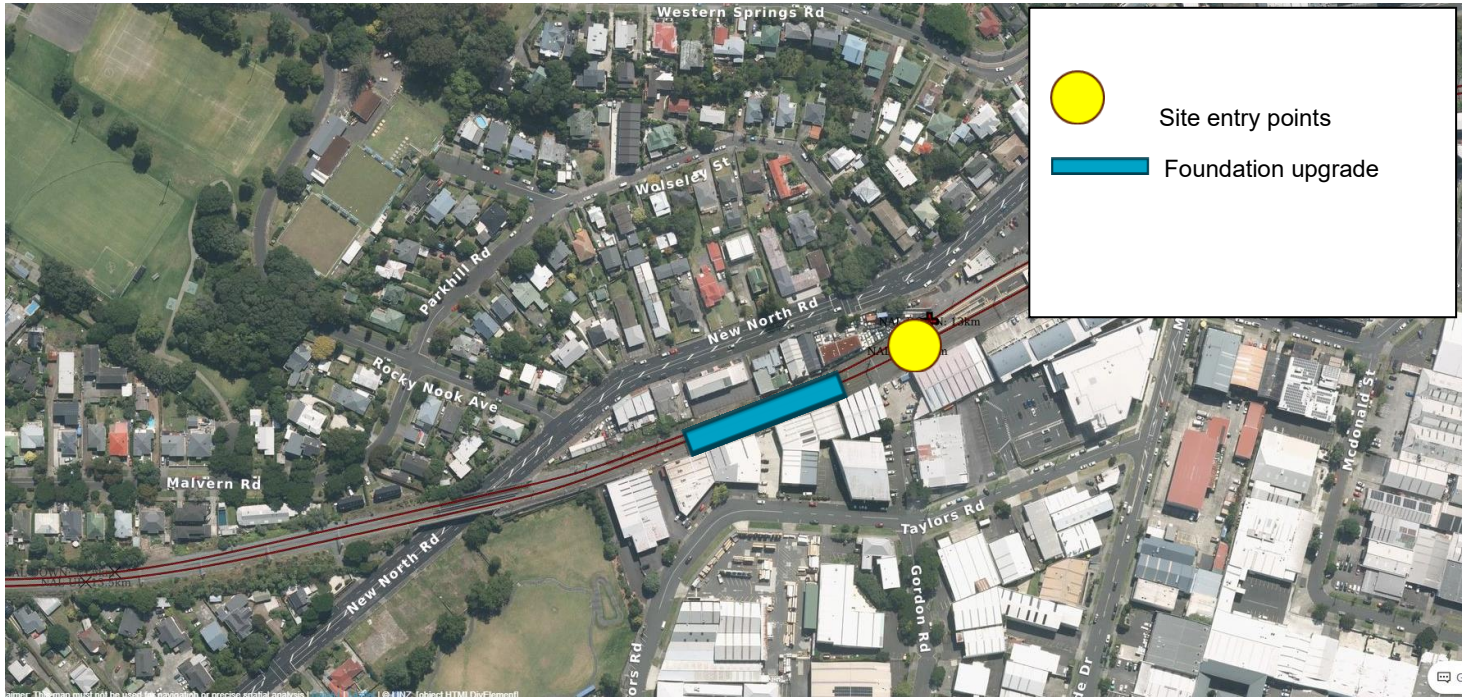
Thanks for your patience while we carry out this important work - The KiwiRail team.
contactus@kiwirail.co.nz or 0800 801 070 ext 43042

KiwiRail 

Night works – what you can expect

We are undertaking major track works in your area. During this work there may be noise, dust, vibrations and lights needed to keep the workers safe at night. Our teams are mindful that they are working in residential areas and will do their best to keep the disruption to a minimum. However, despite their efforts this work may cause you some disturbance and we apologise in advance for this.

There will also be increased vehicle movements near Morningside Station so please take extra care when in these areas. Work areas and the access points are shown in the map below.



Thanks for your patience while we carry out this important work - The KiwiRail team.
contactus@kiwirail.co.nz or 0800 801 070 ext 43042

