



## MANUREWA RAIL CONSTRUCTION WORKS

July 2026

### Dear neighbour,

KiwiRail is completing its upgrade of the Auckland rail network in your area to make train travel more resilient and reliable and to prepare for the more frequent trains the City Rail Link (CRL) will bring when it opens later this year.

### During the Matariki long weekend (see dates right), KiwiRail will complete an upgrade of our rail infrastructure in Manurewa.

Teams will complete a drainage upgrade and undertake associated track works.

We will be using our site at Myers Road for materials storage (laydown area) and site access and the Spartan Road crossing to access the rail corridor. Please exercise caution in these areas.

The nature of the work means it can only be undertaken when there are no passenger trains running. There will be a full Auckland rail network closure between 9 and 12 July 2026.

Rail passengers are encouraged to check the AT Mobile app or visit the Auckland Transport website to plan their travel [at.govt.nz/journeyplanner](https://at.govt.nz/journeyplanner)

This project is part of KiwiRail's work to prepare Auckland's rail network for increased services, shorter journeys, and more frequent trains as part of the CRL.

### What we are doing:

KiwiRail teams will complete the installation of some modern drainage along the rail corridor. We will also undertake some track works, including welding and grinding activity.

This upgrade work will improve the reliability and resilience of the rail network and allow more frequent trains.

### Upcoming dates

Construction works to upgrade Manurewa rail infrastructure:

- **Friday 10 July to Sunday 12 July 2026** (Matariki long weekend): 7am to 6pm (dayshift only)

At times temporary traffic management will be required – please follow the signs.

### Find out more

If you have any queries about our work, contact our Community Engagement Team via [contactus@kiwirail.co.nz](mailto:contactus@kiwirail.co.nz) or 0800 801 070 ext 43042

To find out about your public transport options during the Rail Network Rebuild visit [www.at.govt.nz](https://www.at.govt.nz) or call 09 366 6400.

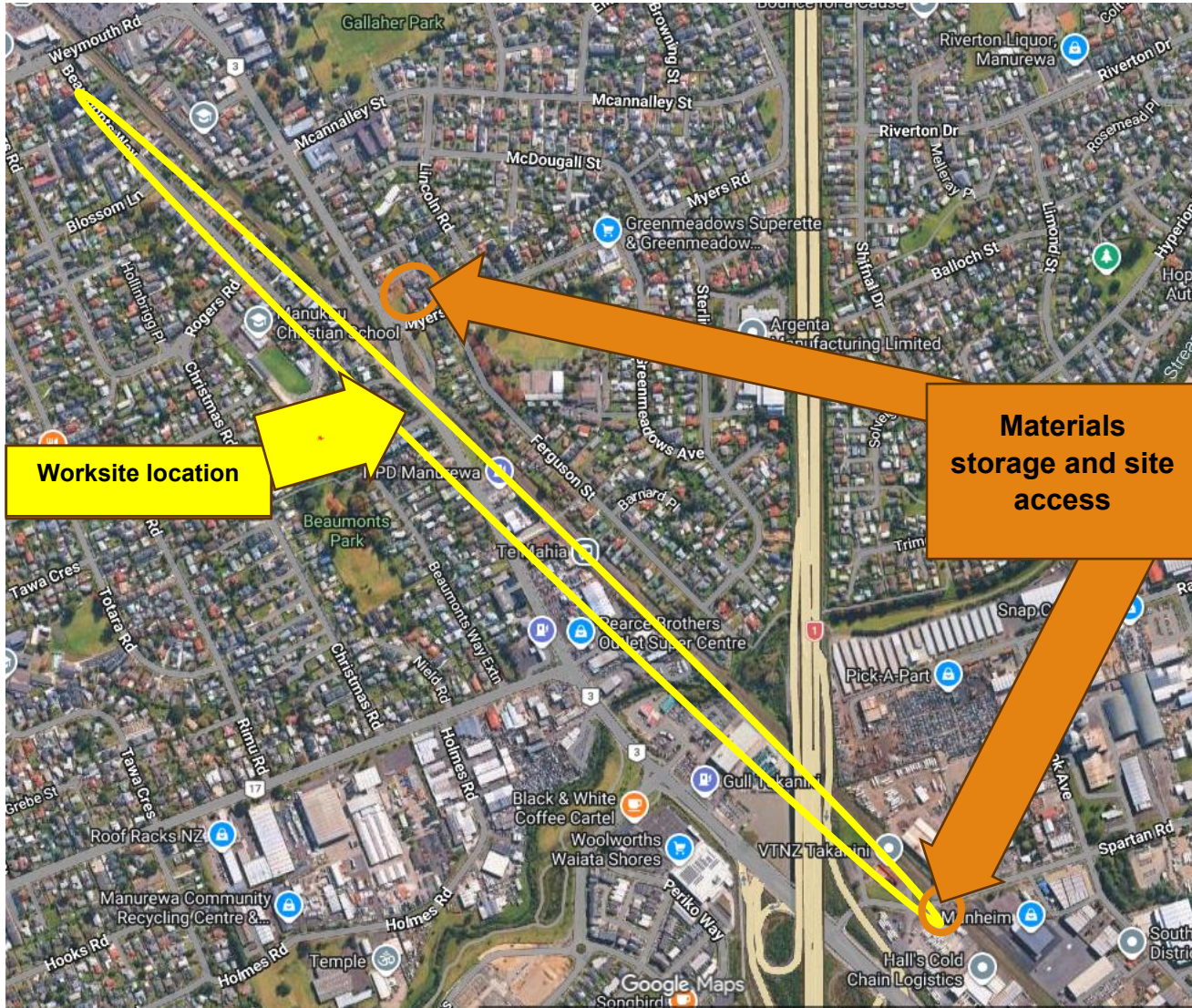
## ABOUT THE CONSTRUCTION SITE

### How this affects you:

There will be noise from machinery and heavy vehicles moving around and KiwiRail teams moving around the area.

Our staff are mindful of our neighbours and will work to minimise any disturbance. However, despite their efforts this work may cause you some disturbance and we apologise in advance for this.

We will be using our yard just north of Myers Road to store materials (see locations marked with orange on the below map) and to access the rail corridor and using another access point on the Spartan Road crossing. Please exercise caution when in these areas.



Thanks for your patience while we carry out this important work - The KiwiRail team.  
contactus@kiwirail.co.nz or 0800 801 070 ext 43042