

QUAY PARK WORKS: DAYTIME CONSTRUCTION

February 2026

Dear neighbour,

KiwiRail teams will be undertaking remedial works in the Quay Park area over the Waitangi Day long weekend. We are completing a major upgrade of our rail network in preparation for City Rail Link, and the more frequent train services it will bring, when it opens in the second half of 2026.

Teams will work from 6-8 February (see hours of work over the three days – right) **to complete works at this location.** We will be storing material at various locations within the worksite. Our team will access the worksite from Tamaki Drive (as marked in the map – overleaf).

Please exercise caution when in the area. This work can only be undertaken when there are no passenger trains running.

There will be a full Auckland rail network closure between 6 and 8 February. Passengers are encouraged to check the AT Mobile app or visit the Auckland Transport (AT) website to plan their travel at.govt.nz/journeyplanner

Thank you for your ongoing patience as we continue to undertake maintenance and upgrade works on the rail tracks near your property.

What we are doing:

Our teams will be completing upgrade work on the rails around the Quay Park area. There will be vehicles and machinery travelling in and out of the rail corridor, though fewer of this than during the Summer Rail Upgrade.

How this affects you:

There will be noise from heavy machinery, staff and vehicles moving around. Teams will be accessing the rail corridor from Tamaki Drive.

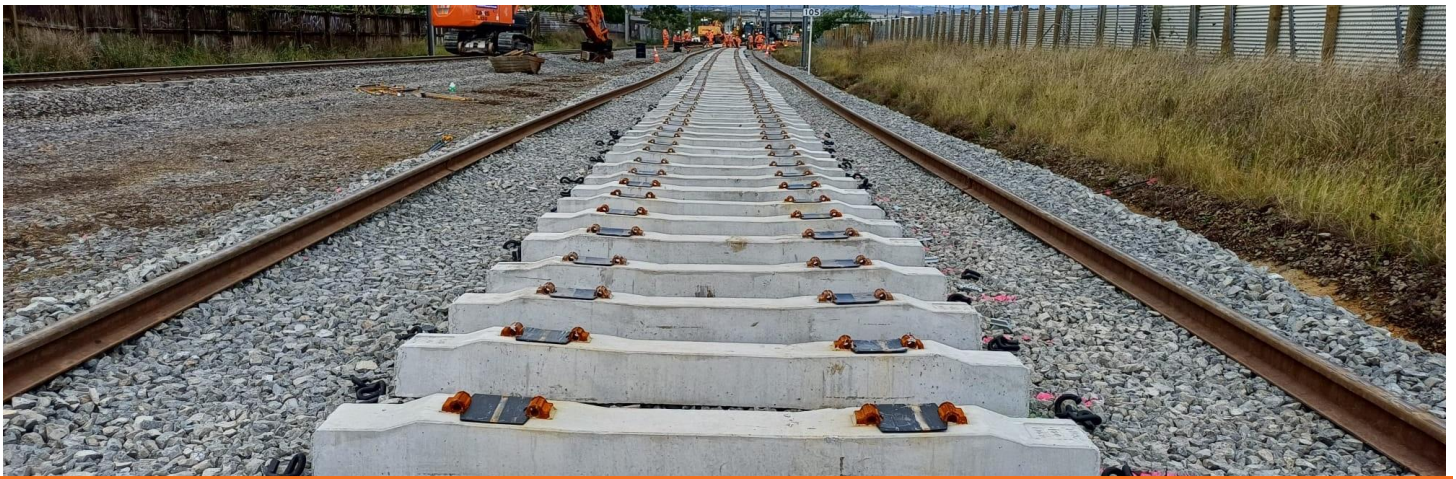
Our staff and contractors are mindful of our rail neighbours and will work hard to minimise any disturbance to get this essential work done as quickly and quietly as possible. However, despite their best efforts, this work may cause you some disturbance and we apologise for the inconvenience.

Upcoming Dates

- **Friday 6 February to Sunday 8 February 2026:** construction works between 6am and 6pm (dayshift only)

Find out more

If you have any questions about our work, contact our Community Engagement Team via contactus@kiwirail.co.nz or 0800 801 070 ext 43042.



QUAY PARK WORKS: DAYTIME CONSTRUCTION

February 2026

How does this affect me?

During this work, general construction noise, vibration, dust and increased truck movement should be expected.

Our staff and contractors are mindful of our rail neighbours and will work hard to minimise any disturbance, to get this essential work done as quickly and quietly as possible. However, despite their best efforts, this work may cause you some disturbance and we apologise for the inconvenience.

Access point

