

Rail Network Rebuild

TAKANINI RAIL WORKS: 24/7 CONSTRUCTION

July 2025

Dear neighbour,

KiwiRail is rebuilding the rail network in your area to make rail travel more resilient and reliable and to prepare for the faster, more frequent trains the City Rail Link (CRL) will bring when it opens next year. We are continuing a major upgrade of our rail network between Papakura and Wiri, including Takanini.

We will be **working in your area 24/7 from Monday 7 July until Friday 11 July to upgrade drainage under the train tracks near your property. These works will happen day and night** so we can complete them as quickly as possible.

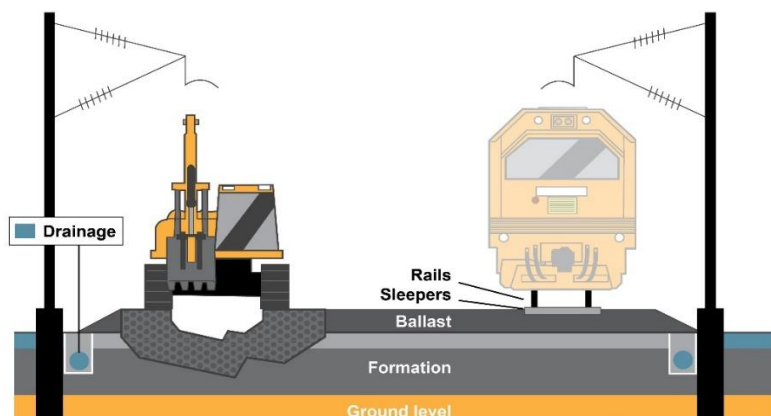
This is during a partial closure of the rail network during the June-July school holidays when there are no trains running south of Puhinui Station in Papatoetoe. Check before you travel by train at at.govt.nz/railclosures

What we are doing:

The Rail Network Rebuild work will improve reliability, allow more frequent trains and improve the ride for passengers.

The work involves the following steps:

- Cutting and removing existing track and sleepers
- Using small excavators to build new drainage structures
- Digging up and rebuilding foundations, excavating and replacing ballast
- Laying tracks and sleepers, connecting, re-aligning and balancing tracks.



Upcoming dates

- **Monday 7 July – Friday 11 July: 24/7 rail works**
- **28 June – 13 July: 24/7 partial rail closure**

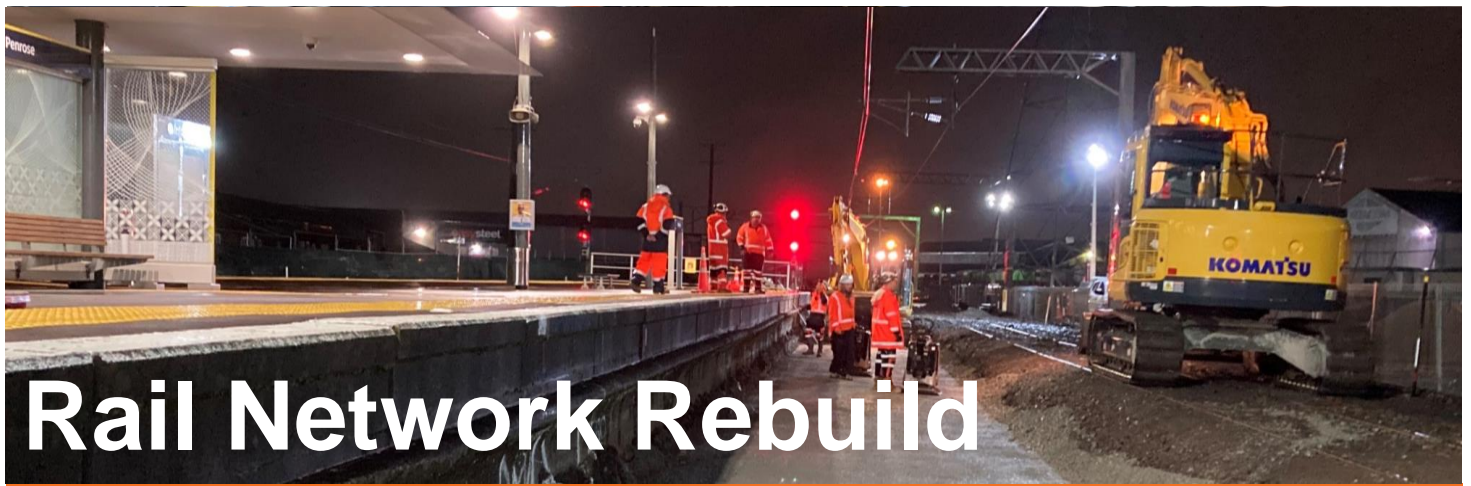
Find out more

For enquiries and to sign up to work notifications by email please contact us via **contactus@kiwirail.co.nz or 0800 801 070 ext 43042.**

Visit our website: **kiwirail.co.nz/aklrailrebuild.**

Thanks for your patience while we carry out this important work - The KiwiRail team
contactus@kiwirail.co.nz or 0800 801 070 ext 43042

KiwiRail 



Rail Network Rebuild

TAKANINI RAIL WORKS: 24/7 CONSTRUCTION

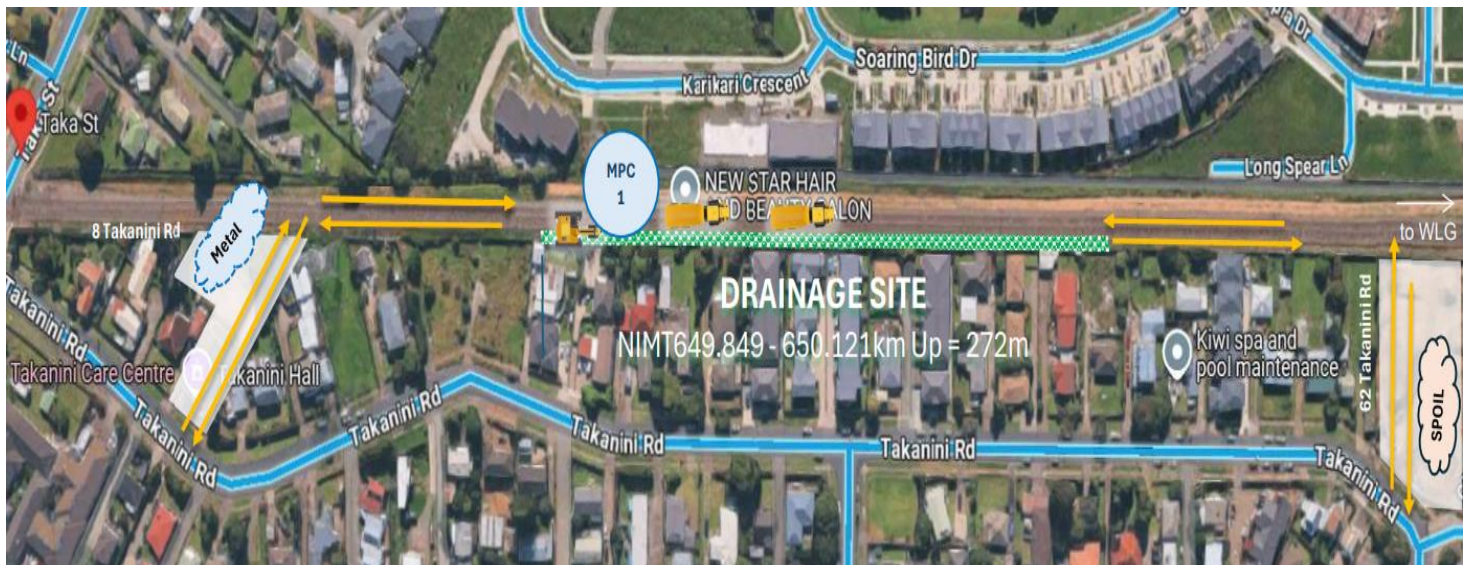
July 2025

How this affects you:

During this work there may be noise, dust, vibrations and lights needed to keep the workers safe at night. Our teams are mindful that they are working near residential areas and will do their best to keep the disruption to a minimum. However, despite their efforts this work may cause you some disturbance and we apologise in advance for this.

KiwiRail also apologises for the late notification of these works.

There will also be increased vehicle movements in the areas indicated by yellow lines in the map below, so please take extra care when in these areas. Materials will be transported to and stored near (62 Takanini Road - marked by SPOIL) and near 8 Takanini Road (shown as Metal).



For more information:

To learn more about where KiwiRail is working, visit: <https://www.kiwirail.co.nz/our-network/our-regions/amp/upcoming-work/>

Thanks for your patience while we carry out this important work - The KiwiRail team
 contactus@kiwirail.co.nz or 0800 801 070 ext 43042

KiwiRail 