

SEPTEMBER RAIL WORKS IN PAERATA

Dear neighbour,

KiwiRail is continuing to rebuild and upgrade Auckland's rail network to make train travel more resilient and reliable and to prepare the network for more frequent trains the City Rail Link (CRL) will bring when it opens next year.

Our teams will be taking the opportunity when the Southern Line is closed to **undertake some further foundation improvements in the rail corridor near your property**. The bulk of the work will occur during part of the September-October school holidays (**20-26 September**) when there is a partial shutdown of the Auckland rail network. Teams will be travelling to site from Tuesday 16 September.

We plan to replace and clean a total of 6.7km of ballast (rocks that the tracks sit on) as part of our Rail Network Rebuild (RNR) programme that is replacing aging foundations and completing enhanced maintenance to make our rail network more resilient.

KiwiRail will likely return during the 2025-26 summer rail closure period to complete this work. We will update you on this closer to the time.

To find out more visit kiwirail.co.nz/aklrailrebuild.

How this affects you:

Our teams are aware they are working close to neighbouring properties and will do all they can to minimise any disturbance. However, there is likely to be noise and increased vehicle movements from this activity and we apologise in advance for this.

Traffic management will be in place in one area (as marked in the overleaf). There will be increased truck movements, work trains and rail vehicles operating. Please take extra care around the network.

Upcoming dates

Ballast cleaning & tamping:

- **September-October school holidays:** 6am Tuesday 16 September – 7pm Thursday 26 September: day works only

Find out more

If you have any queries about our work, contact our Community Engagement Team via **contactus@kiwirail.co.nz** or **0800 801 070 ext 43042**.

To receive future work notifications by email, send your address with your details to the contacts above.

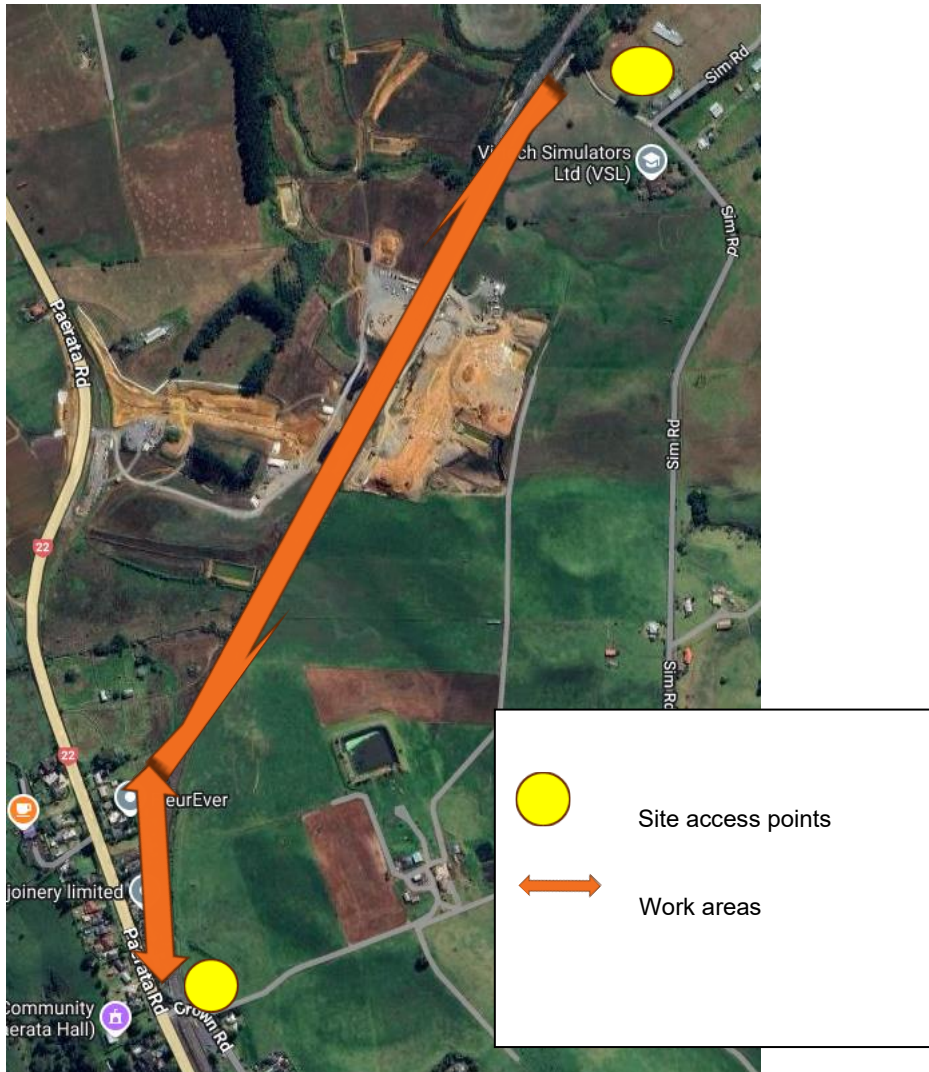
Thanks for your patience while we carry out this important work - The KiwiRail team.

SEPTEMBER RAIL WORKS IN PAERATA

The ballast cleaning train will run along two sections of rail between Paerata and Papakura. A tamper will then tamp the new ballast into place. The two work locations are marked in the map below:

1. Beginning just south of where Sim Road meets the rail line, in the north-east
2. North of Crown Road in the south

Vehicles will access the work areas from Crown Road in the south and via Sim Road in the north. Our usual access site at Sim Road will be used to store some of the ballast. Traffic management will be in place in Crown Road.



These works will occur during 6am to 7pm over 20-26 September 2025, with increased vehicle movements from 16 September as teams set up.

This is during a partial closure of the rail network (20 September to 5 October) when there are no trains running south of Manukau Station. Check before you travel by train at govt.nz/railclosures

How can I get in contact?

For more information, or to receive our works notices by email, please contact our Community Engagement team on contactus@kiwirail.co.nz

Thanks for your patience while we carry out this important work - The KiwiRail team.