



Rail Network Rebuild

MANUREWA 24/7 RAIL CONSTRUCTION WORKS

September 2025

Dear neighbour,

KiwiRail is rebuilding the rail network in your area to make rail travel more resilient and reliable and to prepare for the more frequent trains the City Rail Link (CRL) will bring when it opens next year. We are undertaking a major upgrade of our rail network in South Auckland, including Manurewa.

Over the September-October school holidays, KiwiRail will install a new turnout track structure and overhead electric lines in Manurewa, near your property. Some of these works will happen day and night so we can complete them as quickly as possible.

This work will happen during a partial closure of the rail network during the school holidays when there are no trains running south of Manukau Station. Check before you travel by train at govt.nz/railclosures

This is part of the Rail Network Rebuild programme to prepare Auckland's rail network for increased services, shorter journeys, and more frequent trains as part of the CRL.

What we are doing:

We are undertaking major track works in your area. This work can generally only be done during extended periods when no or reduced numbers of commuter trains are running.

The work will involve physically lifting and then tamping the track and new turnout track structure, which allows trains to switch tracks) to the final design alignment. Our teams will also install overhead electric lines to power the new track structure.

This will be put in place at on the rail corridor as marked in the map (overleaf). For part of this work, we will use an elevated work platform (EWP, or crane) to allow our team to safely work at the required height. The EWP may overlook some nearby properties for a short period of time.

We will also carry out civil works to hold new signalling and communication cables, as well as installing concrete foundations to hold new overhead masts.

Teams will need to do further completion works here at a later date to install new overhead masts and new overhead contact wires (which powers the electric trains using the turnout to switch tracks). We will be sure to notify you when this work is scheduled.

Upcoming dates

24/7 construction works to upgrade Manurewa rail infrastructure:

- **20 September to 5 October school holidays: 24/7 construction works**

At times temporary traffic management will be required – please follow the signs.

Find out more

If you have any queries about our work, contact our Community Engagement Team via contactus@kiwirail.co.nz or 0800 801 070 ext 43042

To find out about your public transport options during the Rail Network Rebuild visit www.at.govt.nz or call 09 366 6400.

ABOUT THIS CONSTRUCTION SITE

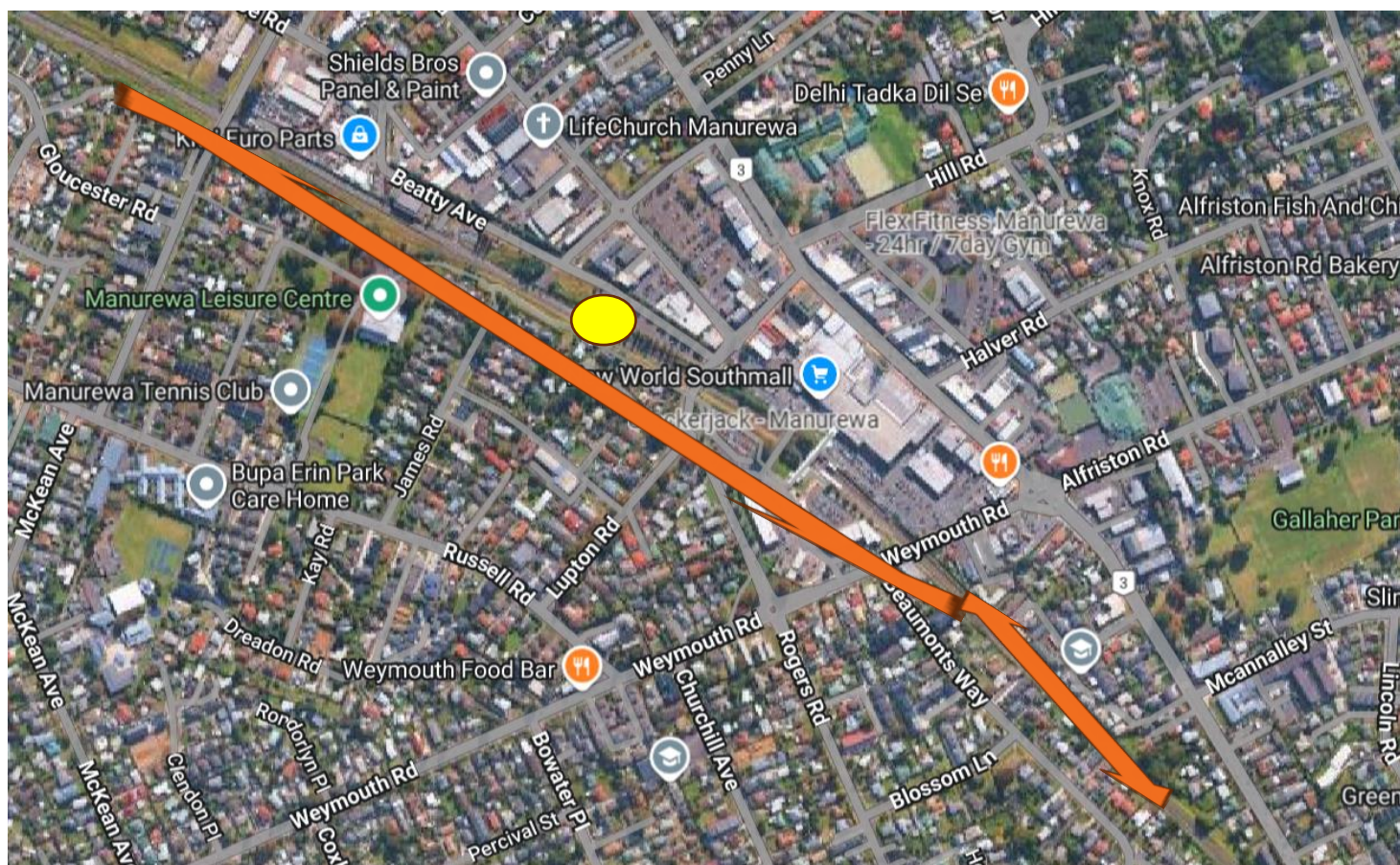
How this affects you:

There will be noise from machinery and heavy vehicles moving around as well as bright lights and KiwiRail teams in the area.

Our staff are mindful of our neighbours and will work to minimise any disturbance. Wherever possible staff will aim to carry out noisier works during the day. However, despite their efforts this work may cause you some disturbance and we apologise in advance for this.

We will be using part of the parking area behind **City Fitness, 6 Maich Road**, Manurewa to store equipment including the crane. Traffic management will be in place, so please take extra care when in the area. A map of the affected area follows (overleaf).

The overhead electric lines will be installed in the rail corridor as marked with the orange line on the map below. Our team will access the work site via the car parked, behind City Fitness, marked with the yellow circle.



Thanks for your patience while we carry out this important work - The KiwiRail team.
contactus@kiwirail.co.nz or 0800 801 070 ext 43042