



Rail Network Rebuild

PUKEKOHE RAIL WORKS: NIGHT SHIFT CONSTRUCTION

FEBRUARY 2026

Dear neighbour,

KiwiRail is completing its rebuild and upgrade of Auckland's rail network to make train travel more resilient and reliable and to prepare the network for the more frequent trains the City Rail Link (CRL) will bring when it is in the second half of 2026. We are completing a major upgrade of our rail network between Pukekohe and Paerata.

Over the Waitangi Day long weekend (see dates and hours of work – right), **KiwiRail will complete a major upgrade of our rail infrastructure in Pukekohe.** Teams will carry out distress works, which involve cutting and stretching a section of rail to relieve stress and reduce the risk of buckling or cracking.

Due to needing cooler temperatures for distressing, our teams will be working at night to complete this project.

As this is a large and complex piece of work, it can only be undertaken when there are no passenger trains running. There will be a full Auckland rail network closure between 6 and 8 February.

Please check the AT Mobile app or visit the Auckland Transport website to plan your travel at.govt.nz/journeyplanner

How this affects you:

We are undertaking major track works in your area. This work can generally only be done during extended periods when no or reduced numbers of commuter trains are running.

Our teams are aware they are working close to neighbouring properties and will do their best to minimise any disturbance. However, there is likely to be noise and from this activity; we apologise in advance for this.

There will be increased truck movements, work trains and rail vehicles operating. Please take extra care around the network.

Upcoming dates

- **Friday 6 February to Sunday 8 February 2026:** 6pm to 5am construction works to distress rails

Find out more

If you have any queries about our work, contact our Community Engagement Team via contactus@kiwirail.co.nz or 0800 801 070 ext 43042.

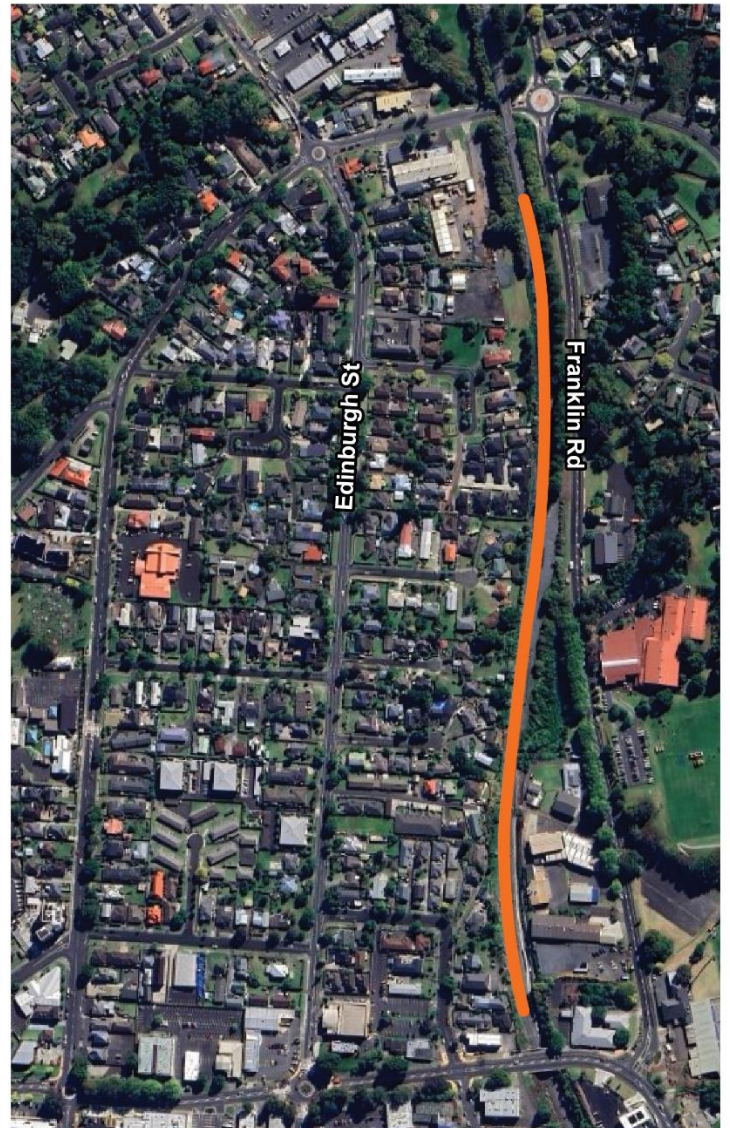
To receive future work notifications by email, send your address with your details to the contacts above.

Thanks for your patience while we carry out this important work - The KiwiRail team.

KiwiRail 

The destressing of rail lines will take place along two sections in the rail corridor in Pukekohe. The two work locations are marked in the maps below:

1. Left map below: Cape Hill Road & Franklin Road roundabout in the south to just north of Counties Storage (1219 Paerata Road) in the north
2. Right map below: Stadium Drive in the south to just south of Cape Hill Road in the north



How can I get in contact?

For more information, or to receive our works notices by email, please contact our Community Engagement team on contactus@kiwirail.co.nz

Thanks for your patience while we carry out this important work - The KiwiRail team.