

Rail Network Rebuild

MANUREWA RAIL WORKS: 24/7 CONSTRUCTION

September 2025

Dear neighbour,

KiwiRail is rebuilding the rail network in your area to make rail travel more resilient and reliable and to prepare for the more frequent trains the City Rail Link (CRL) will bring when it opens next year. We are undertaking a major upgrade of our rail network between Papakura and Wiri, including Manurewa.

Over the September-October school holidays, KiwiRail will continue to replace aging foundations and upgrade drainage under the tracks in the rail corridor near your property. Some of these works will happen day and night so we can complete them as quickly as possible. Sites at Myers Road, Spartan Road and Beatty Road will be used as access points for vehicles needed for this work.

The pedestrian crossing at Te Mahia Station, between Ferguson Street and Great South Road, will be closed to pedestrians for the duration of the works. A partial closure of the rail network during the school holidays means that there will be no trains running south of Puhinui Station in Papatoetoe. Check before you travel by train at govt.nz/railclosures

Work will continue at this location over another partial rail closure scheduled for 24-27 October this year and the 2025-26 Summer Rail Upgrade.

The Rail Network Rebuild (RNR) replaces aging foundations under the tracks and upgrades drainage to make them more resilient to weather events. The work allows trains to be more reliable and helps get the network ready for the CRL.

What we are doing:

RNR will improve reliability, allow more frequent trains and improve the ride for passengers. The work involves the following steps:

- Cutting and removing existing track and sleepers
- Using small excavators to build new drainage structures
- Digging up and rebuilding foundations, excavating and replacing ballast
- Laying tracks and sleepers, connecting, re-aligning and balancing tracks.

Upcoming dates

24/7 construction works to improve rail infrastructure:

- **September-October school holidays:**
7am Saturday 20 Sept. to 6pm Sunday 5 Oct.
- **Extended Labour Day holiday weekend:** Friday 24 October to Monday 27 October inclusive

Find out more

For enquiries and to sign up to work notifications by email please contact us via contactus@kiwirail.co.nz or 0800 801 070 ext 43042.

Visit our website: kiwirail.co.nz/aklrailrebuild.

Thanks for your patience while we carry out this important work - The KiwiRail team.
contactus@kiwirail.co.nz or 0800 801 070 ext 43042

KiwiRail 

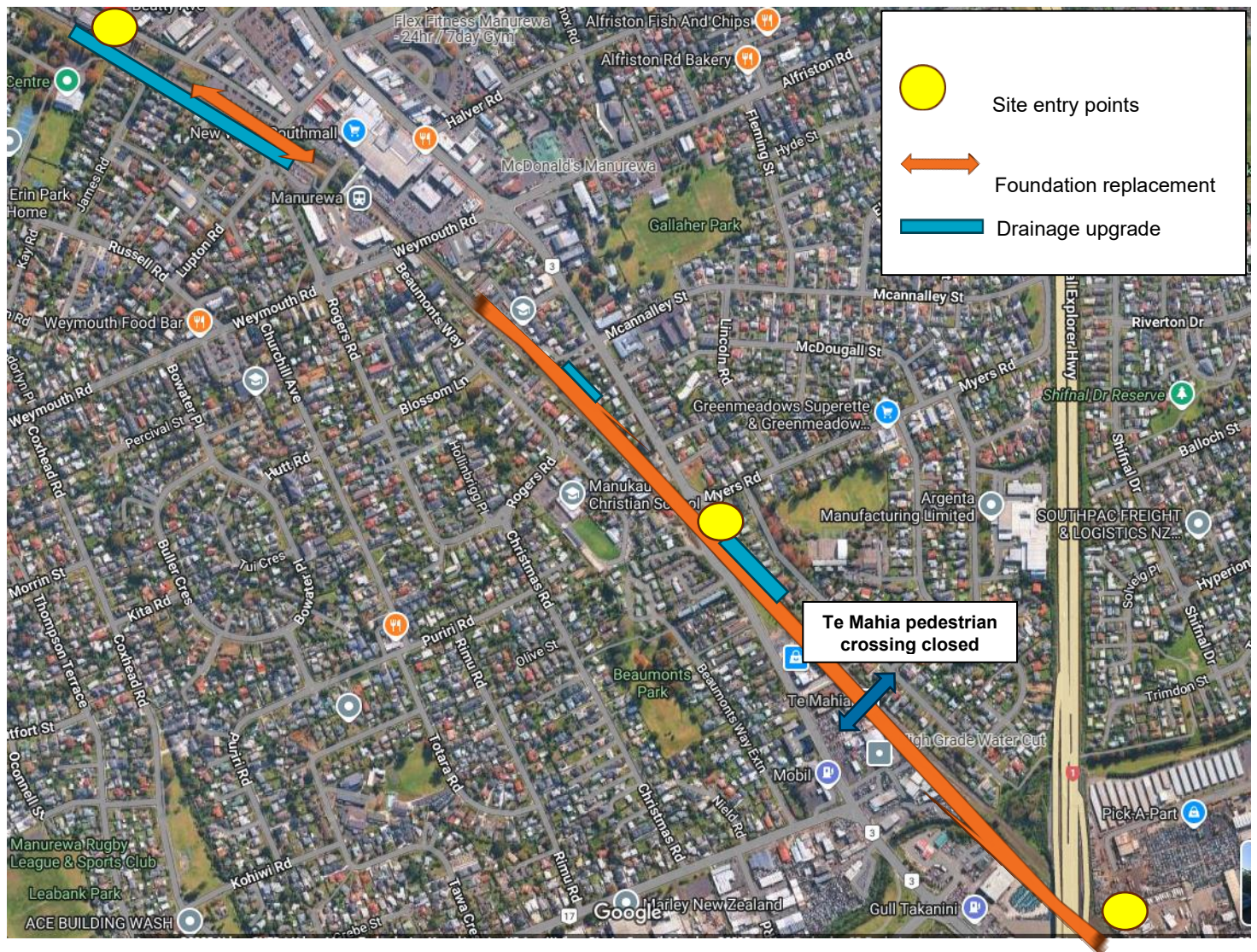
Night works – what you can expect

We are undertaking major track works in your area. During this work there may be noise, dust, vibrations and lights needed to keep the workers safe at night. Our teams are mindful that they are working in residential areas and will do their best to keep the disruption to a minimum. However, despite their efforts this work may cause you some disturbance and we apologise in advance for this.

There will also be increased vehicle movements near Myers Road, Spartan Road and Beatty Road so please take extra care when in these areas. Work areas and the three access points are shown in the map below.

Pedestrian crossing at Te Mahia station closed

Pedestrians will not have access to the pedestrian crossing at Te Mahia station, between Ferguson Street and Great South Road, for the duration of the works.



Thanks for your patience while we carry out this important work - The KiwiRail team.

contactus@kiwirail.co.nz or 0800 801 070 ext 43042