



Rail Network Rebuild

RAIL REMEDIATION WORKS: MAUNGAWHAU (MT EDEN)

May 2025

Dear neighbour,

KiwiRail is continuing to rebuild and upgrade Auckland's rail network to make train travel more resilient and reliable and prepare the network for the more frequent trains the City Rail Link (CRL) will bring when it opens next year.

Our teams will be applying some shotcrete to exposed rock opposite the Maungawhau (Mt Eden) station platform. This work, which will take three days to complete, will occur over either the King's Birthday or Matariki long weekend – depending on weather conditions over the first weekend. Equipment will be delivered to an Akiraho Street address and this will be used as an access point – with increased vehicle movements (see map overleaf).

These works are part of the final stages of the Rail Network Rebuild project to replace aging rail foundations and upgrade drainage, making our network more resilient.

The work allows trains to be more reliable and helps get the network ready for the CRL.

To find out more visit kiwirail.co.nz/aklrailrebuild.

How this affects you:

Our teams are aware they are working close to residential neighbours and will do all they can to minimise any disturbance. However, there is likely to be some noise and odour from this activity, and increased vehicle movements along Akiraho Street. Our teams will be delivering equipment on the Friday morning and removing it on the Sunday.

Upcoming dates

Either (weather dependent):

- **King's Birthday weekend:** Friday 30 May – Sunday 1 June (day works only)

Or (rain date):

- **Matariki weekend:** Friday 20 June – Sunday 22 June (day works only)

Find out more

If you have any queries about our work, contact our Community Engagement Team via contactus@kiwirail.co.nz or 0800 801 070 ext 43042.

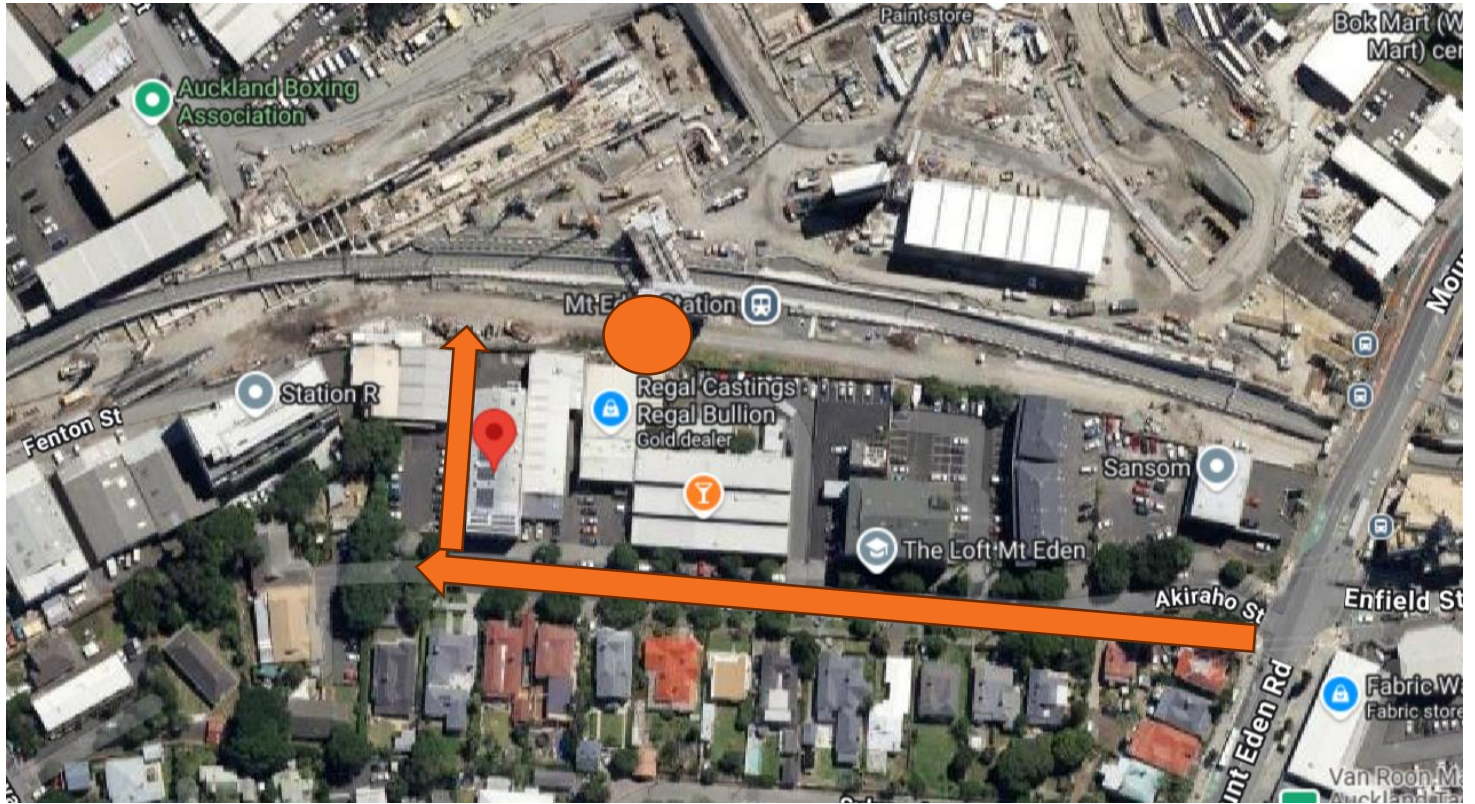
To receive future work notifications by email, send your address with your details to the contact above.

Thanks for your patience while we carry out this important work - The KiwiRail team.

KiwiRail 

LOCATION AND TYPE OF WORKS

The worksite, marked with an orange circle in the map below, is opposite the Maungawhau (Mt Eden) station platform. Shotcrete will be applied to mould an exposed rock surface. The access point for our contractor's vehicles is marked by the north to south arrow. A small number of vehicles will travel down Akiraho Street.



Our teams are mindful that they are working near other properties and will do their best to keep the disruption to a minimum.

To speak to KiwiRail about our rail upgrades, please contact us on contactus@kiwirail.co.nz

