



## PUKEKOHE RAIL WORKS: 24/7 CONSTRUCTION

MAY-JUNE 2026

### Dear neighbour,

KiwiRail is continuing to rebuild and upgrade Auckland's rail network to make train travel more resilient and reliable and to prepare the network for the more frequent trains the City Rail Link (CRL) will bring when it opens next year. We are completing an upgrade of our rail network between Pukekohe and Paerata.

**Over the King's Birthday long weekend** (dates right), **KiwiRail will complete an upgrade of our rail infrastructure in Pukekohe.** Teams will carry out distress works, which involve cutting and stretching a section of rail to relieve stress and reduce the risk of buckling or cracking.

As this is a large and complex piece of work, it can only be undertaken when there are no passenger trains running.

There will be a full Auckland rail network closure between 30 May to 1 June. Please check the AT Mobile app or visit the Auckland Transport website to plan your travel [at.govt.nz/journeyplanner](https://at.govt.nz/journeyplanner)

### How this affects you:

We are undertaking major track works in your area. This work can generally only be done during extended periods when no or reduced numbers of commuter trains are running.

Our teams are aware they are working close to neighbouring properties and will do their best to minimise any disturbance. However, there is likely to be noise and increased vehicle movements from this activity; we apologise in advance for this.

### Upcoming dates

Construction works:

- **6am-6pm on Saturday 30 May to Monday 1 June** (King's Birthday long weekend): dayshift only

### Find out more

If you have any queries about our work, contact our Community Engagement Team via [contactus@kiwirail.co.nz](mailto:contactus@kiwirail.co.nz) or **0800 801 070 ext 43042.**

To receive future work notifications by email, send your address with your details to the contacts above.

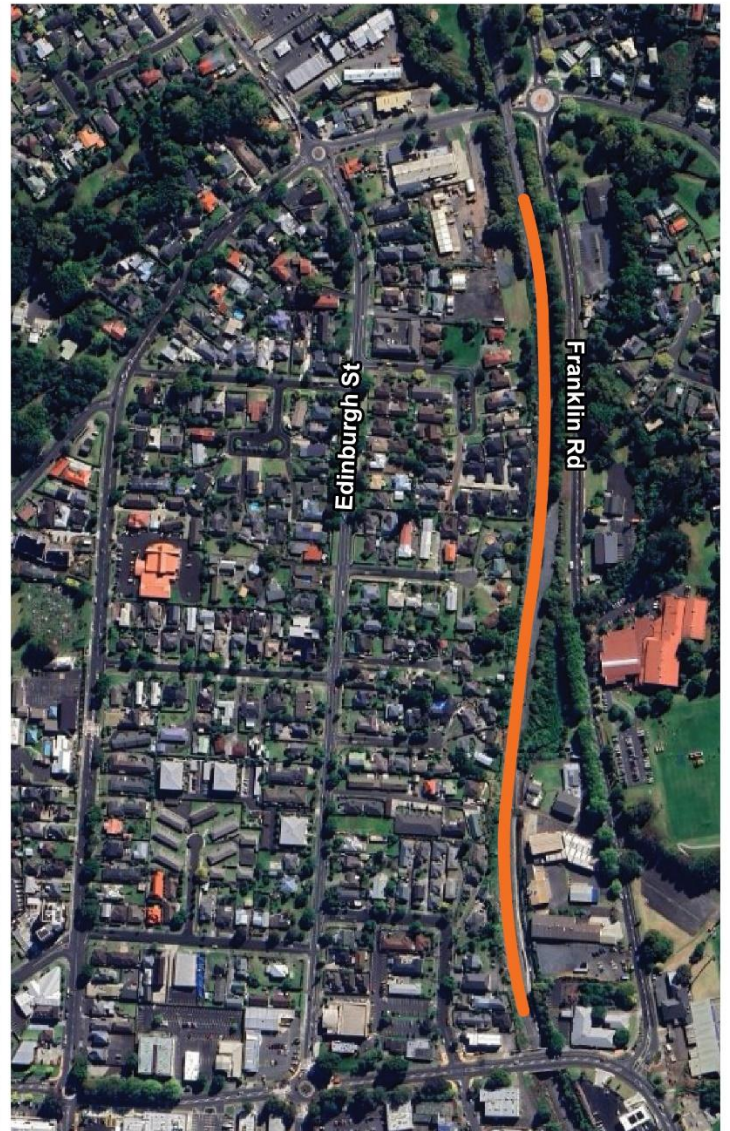
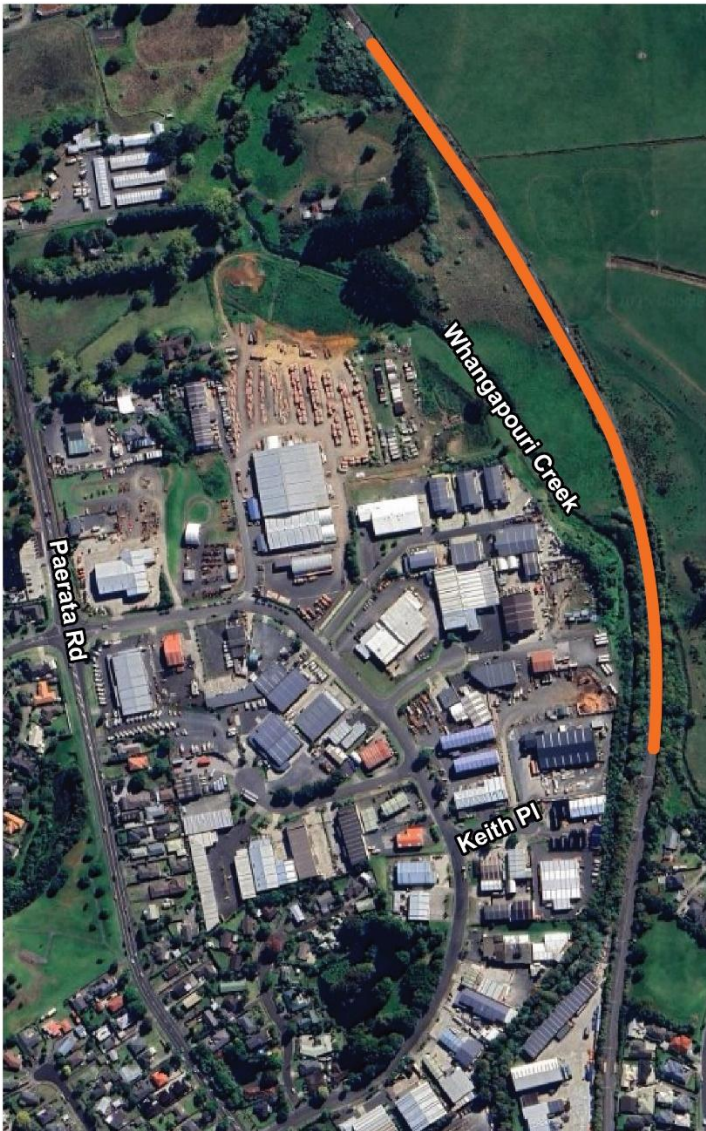
Thanks for your patience while we carry out this important work - The KiwiRail team.

**KiwiRail** 

The destressing of rail lines will take place along two sections in the rail corridor in Pukekohe. The two work locations are marked in the maps below:

1. Left map below: Cape Hill Road & Franklin Road roundabout in the south to just north of Counties Storage (1219 Paerata Road) in the north
2. Right map below: Stadium Drive in the south to just south of Cape Hill Road in the north

There may be increased vehicle movements in the vicinity; please proceed with caution.



**How can I get in contact?**

For more information, or to receive our works notices by email, please contact our Community Engagement team on [contactus@kiwirail.co.nz](mailto:contactus@kiwirail.co.nz)

Thanks for your patience while we carry out this important work - The KiwiRail team.