

TAKANINI RAIL WORKS: CONSTRUCTION

May-June 2026

Dear neighbour,

KiwiRail is readying the Auckland rail network to prepare it for the more frequent trains the City Rail Link (CRL) will bring when it opens later this year and to make train travel more resilient and reliable.

During the King's Birthday long weekend (see dates right), KiwiRail will progress an upgrade of our rail infrastructure in Takanini. Our team will complete the installation of two sections of new drainage. They will use a location off Tironui Station Road West to access the rail corridor; please use caution when in the area.

The nature of the work means it can only be undertaken when there are no passenger trains running. There will be a full Auckland rail network closure from Saturday 30 until the end of Monday 1 June 2026.

Please check the AT Mobile app or visit the Auckland Transport website to plan your travel at.govt.nz/journeyplanner

This project is part of KiwiRail's work to prepare Auckland's rail network for increased services and more frequent trains as part of the CRL.

What we are doing:

This upgrade will improve reliability and allow more frequent trains by installing modern drainage and replacing and tamping down new ballast, the rocks the rails sit on.

Upcoming dates*

Construction works to upgrade Takanini rail infrastructure:

- **Saturday 30 May to Monday 1 June** (King's Birthday long weekend) – dayshift only (7am to 6pm)

At times temporary traffic management will be required – please follow the signs.

Find out more

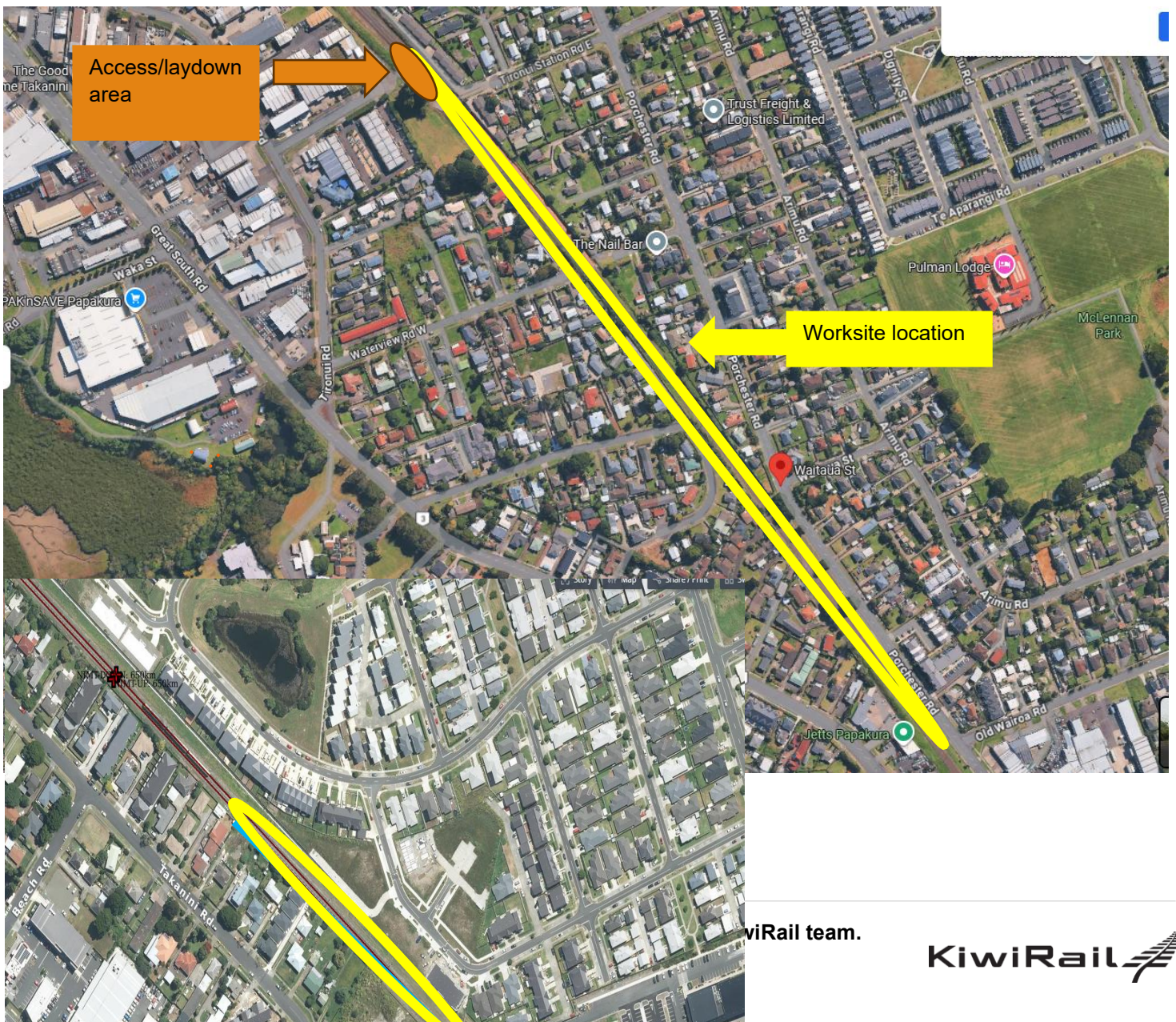
For enquiries and to sign up to work notifications by email please contact us via contactus@kiwirail.co.nz or 0800 801 070 ext 43042.

Visit our website: kiwirail.co.nz/aklrailrebuild.

KiwiRail works – what you can expect

We are completing some construction works in your area. During this work there may be noise, dust, vibrations and increased vehicles in the vicinity. Our teams are mindful that they are working in residential areas and will do their best to keep the disruption to a minimum. However, despite their efforts this work may cause you some disturbance and we apologise in advance for this.

There will be increased vehicle movements at Tironui Station Road West (as marked with the orange circle in the below map), as we will use this area to access the rail corridor. Please take extra caution when in the vicinity. The work locations are marked in the two maps below:



KiwiRail team.

