



Rail Network Rebuild

DECEMBER - JANUARY RAIL WORKS IN PAERATA

December 2025

Dear neighbour,

KiwiRail is continuing to rebuild and upgrade Auckland's rail network to make train travel more resilient and reliable and to prepare the network for the more frequent trains the City Rail Link (CRL) will bring when it opens next year.

Our teams will be taking the opportunity when the Southern Line is closed over the Christmas school holidays to further upgrade rail foundations. **To help with this, some material will be transported and stored in our usual facility at Crown Road, near your property.** This will occur during the Summer Rail Upgrade between **31 December - 17 January 2026**. There will also be teams carrying out track works in the area at times during this period.

This work is part of our Rail Network Rebuild (RNR) programme that is replacing aging foundations and completing enhanced maintenance to make our rail network more resilient.

To find out more visit kiwirail.co.nz/aklrailrebuild

Upcoming dates

- **During Christmas 2025-26 school holidays:** 6am Wednesday 31 December – 6pm Saturday 17 January (day works only)

Find out more

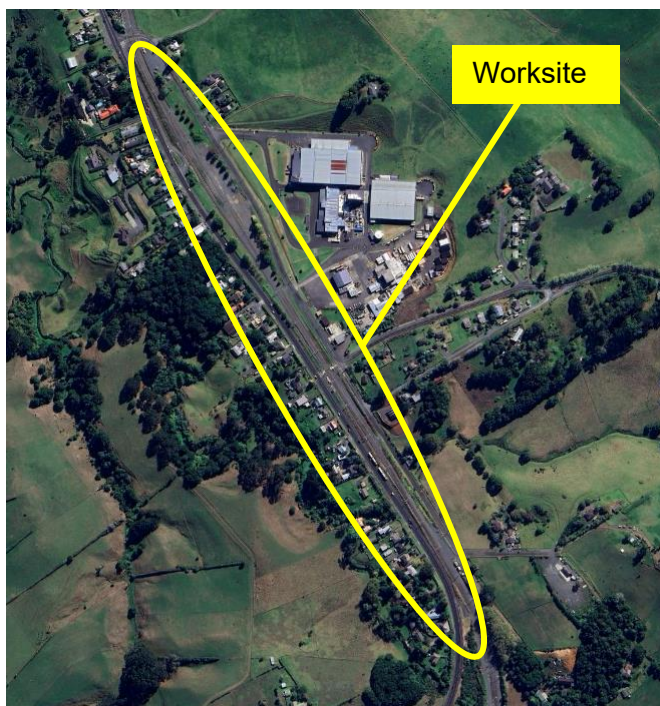
If you have any queries about our work, contact our Community Engagement Team via **contactus@kiwirail.co.nz** or **0800 801 070 ext 43042**.

To receive future work notifications by email, send your address with your details to the contacts above.

How this affects you:

Our teams are aware they are working close to neighbouring properties and will do all they can to minimise any disturbance. However, there is likely to be noise and increased vehicle movements from this activity; we apologise in advance for this.

Traffic management will be in place in some areas. There will be increased truck movements, work trains and rail vehicles operating. Please take when travelling through the area.



Thanks for your patience while we carry out this important work - The KiwiRail team.

