

PAPAKURA STABLING YARD WORKS

September 2025

Dear neighbour,

Our teams will be carrying out the replacement of essential track infrastructure in the Papakura Stabling yard over the September School holidays partial network closure.

This work will take place 24/7 from 6am Saturday 20 September till 6pm Sunday 5 October.

Materials will be delivered during day shifts (6am-6pm) from 8 September to the laydown area near Onslow Road and Ron Keat Drive.

The team will be accessing this site via Ron Keat Drive.

Thank you for your on-going patience as we continue to undertake maintenance, and upgrade works on the rail tracks near your property.

What we are doing:

The work over the shutdown will then involve removing track infrastructure, digging new formations, and then replacing the infrastructure with new assets.

This will be intensive work, involving rail grinding and cutting, digging new formations, welding. Once this has been done, the tamper will then tamp the new ballast into place.

How this affects you:

There will be noise from heavy machinery, staff and vehicles moving around. Teams will be accessing the rail corridor via Ron Keat Drive, so please be careful when in the area. Traffic Management will be in place to manage the truck movements.

Our staff and contractors are mindful of our rail neighbours and will work hard to minimise any disturbance, to get this essential work done as quickly and quietly as possible. However, despite their best efforts, this work may cause you some disturbance and we apologise for the inconvenience.

Upcoming Dates

Material deliveries:

6am- 6pm: Monday 8 September – Saturday 20 September.

Work hours:

24/7: Saturday 20 September – Sunday 5 October

Find out more

If you have any queries about our work, contact our Community Engagement Team via **contactus@kiwirail.co.nz** or **0800 801 070**.

To receive future work notifications by email, please email us at the above address with your details.

For public transport options and information, visit www.at.govt.nz or call 09 366 6400.

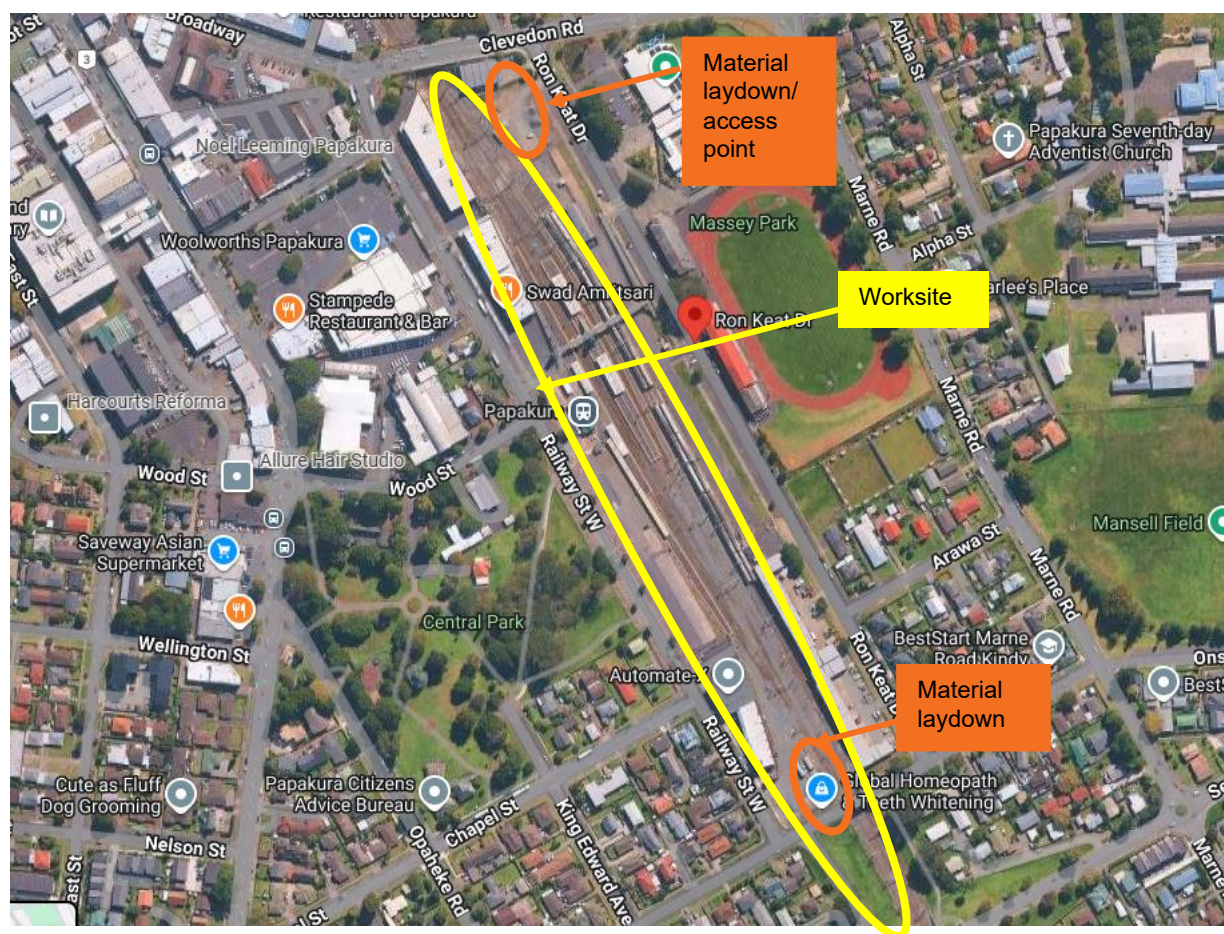


PAPAKURA STABLING YARD WORKS

September 2025

Worksite:

Large vehicles, including cranes, diggers and other heavy machinery will be required to operate during the day and will access the site via Ron Keat Drive. Please be vigilant while entering and exiting your property or using the road.



Worksite access point