

# KiwiRail's Auckland Metro Programme

January 2022



## Major Christmas works programme completed

KiwiRail has successfully delivered an unprecedented work programme across the city during a temporary closure over the Christmas/New Year period. Between 26 December 2021 and 23 January, work was carried out across 31 different sites in Auckland. It has been the single biggest mobilisation of resources for a temporary closure.

Progress was made on projects to extend electrification from Papakura to Pukekohe, construction on the third main line through the busiest part of the network between Westfield and Wiri, replacing track in the complex entry to Britomart Station, and carrying out necessary track repairs across the metro area.

To maximise the benefits of the City Rail Link, the objective is to complete the works by when CRL opens in 2024.

Thanks to recent and ongoing Government support, KiwiRail is now preparing the network for the opening of CRL and also making the network more resilient and reliable. The achievements this summer are part of that wider programme which will continue for the next few years. This will help keep commuter timetables running well, and allow more freight to move from road to rail. Every tonne of freight carried by rail produces 70 percent fewer carbon emissions than the equivalent freight carried by road.

## Big thanks to our neighbours and staff

KiwiRail Acting Chief Executive David Gordon says a big thank you to the people of Auckland, especially our rail corridor neighbours. "We know this work can be noisy and sometimes at inconvenient hours and we thank you for your patience. This necessary work progressed a \$1.5 billion suite

of projects which will enable a world-class rail service." says Mr Gordon.

"My sincere thanks go to our staff and contractors who gave up their time during the Christmas break to make this temporary closure a success. Without these temporary closures, our projects would take years longer to complete."

## What we achieved this temporary closure of the Auckland rail network:

- More than **155,000 hours of labour**
- **17,000m<sup>3</sup> of ballast laid** (the small stones that form the track bed)
- More than **5km of new rail track**
- **Installation of 16 complex track structures** including turnouts, crossovers and scissors (these allow trains to move from one track to another).

## Extension of electrification Papakura to Pukekohe

One of the key components of the Christmas work programme, was the project to extend electrification from Papakura to Pukekohe. A huge amount of civil and track work was completed on this project. Cranes were used to lift a number of complex track structures into place throughout this 19km section of rail including the scissor crossover close to the Pukekohe Station (picture to the right).

These track structures allow trains to move from one track to another and therefore will improve capacity on this section of track where electric passenger trains and diesel freight trains will run.



The new scissor crossover at Pukekohe Station. This track structure, allows trains to move from one track to another



KiwiRail acting CEO David Gordon and Minister of Transport Hon. Michael Wood at Pukekohe Station



Removing tracks at the Pukekohe Station on Boxing Day



Helping to install the crossover at Pukekohe Station

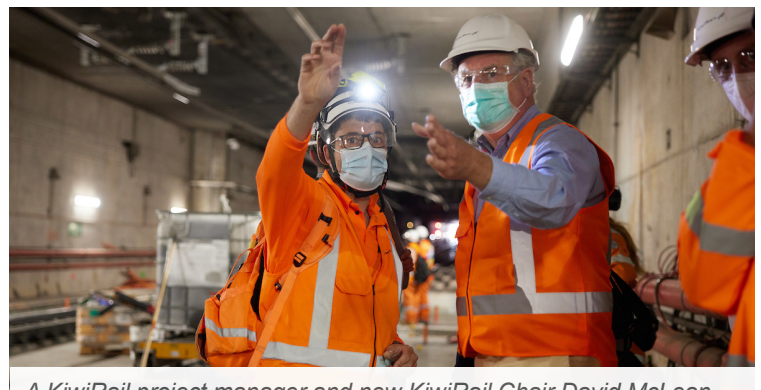
## Britomart

Another big achievement for the KiwiRail team was the work completed at Britomart. In the tunnel entrance to the station, the team replaced all the tracks and then poured a 75 metre long concrete slab under the newly laid tracks.

It was a project that required precision and meticulous planning. A laser was used to ensure the tracks were in place within an accuracy of two millimetres. Then the concrete was poured from trucks that were parked above in Britomart.



Pouring concrete under newly laid track at Britomart



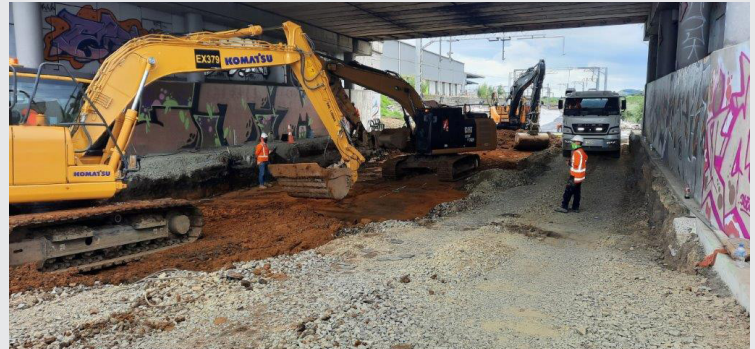
A KiwiRail project manager and new KiwiRail Chair David McLean at Britomart

# 31 sites across Auckland

Work was completed on other sites throughout the network including by Link Alliance for the City Rail Link at Mt Eden.



Building a retaining wall just north of Puhinui Station for the Third Main Track project



Diggers working on the foundation under Great South Rd on the Eastern Line north of Westfield Junction part of the Third Main Track project.



New Chair David McLean (right) at the entrance to the City Rail Link tunnel at Mt Eden Station



Night welding at Westfield Junction



This section of track south of Puhinui Station was moved sideways a few metres as part of the Third Main Track project.



Piling works for the wall at the Wiri Station Rd bridge

For any queries, email us at [aucklandupgrade@kiwirail.co.nz](mailto:aucklandupgrade@kiwirail.co.nz)