



# Hillside Redevelopment Project Newsletter

## November 2022

### Hillside workshops update

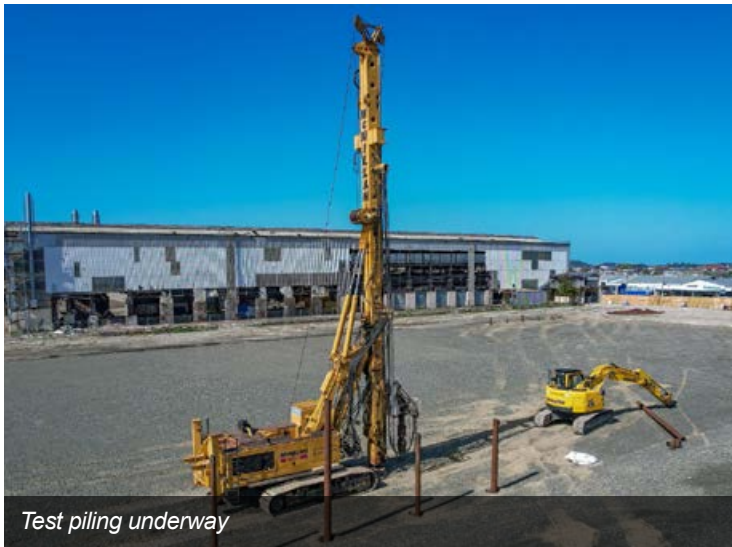
The Hillside Redevelopment Project reached a milestone in September, with the blessing of the new workshop site. Mana whenua, KiwiRail staff and contractors gathered to bless the site and mark the start of construction on the new mechanical workshop.

Mana whenua gifted pounamu from Lake Wakatipu to be laid as a mauri stone acknowledging the past, present and future of the site and the people who have and will work there.

Reflecting the heritage of this site has been an important part of its redevelopment, including incorporating the Workshop

War Memorial into the new design, looking into ways we might retain the original machine shop for future rail use, and offering another building for relocation.

The redevelopment of the Hillside workshops is the result of significant Government funding to build a wagon assembly facility and replace the mechanical workshop, where up to 21 locomotives, wagons or carriages will be able to be worked on at a time. As one of only two heavy rail engineering workshops in the South Island, the new Hillside will provide resilience for mainland rail operations.



Test piling underway



Heavy lift building demolition

### From demolition to construction

After many months of demolition work, the focus for the redevelopment project is now shifting to construction. To date, 17 buildings have been knocked down, with demolition of the heavy lift and foundry buildings now underway. All demolition work is on schedule to be completed early next year.

The design of the new mechanical workshop has been finalised and, following the blessing in September, pile testing has been completed. The first permanent piles for the new workshop are now in the ground and the steel portal frames will start to go up over summer.

We are currently finalising the design of the office building

and associated carparking and landscaping alongside Hillside Road and expect to see visible progress on both fronts next year.

The rail yard re-design is complete and ground works will start before Christmas. Where possible KiwiRail is looking to re-use and recycle, so old concrete slabs will be crushed and re-used in the track formation for the yard and second-hand rail has already been delivered to site, ready to be used in the new yard layout. We expect more than 95 per cent of the demolition materials will be recycled, with much of this destined for re-use in the Hillside site.





Laying mauri stone



New rail yard design

## Meet Martin McArthur

Martin McArthur recently joined KiwiRail as Wagon Assembly Lead for Hillside, the first of many new recruits for the wagon assembly project. Otago-born and bred, Martin worked at Cadbury's for more than 23 years, in roles from Production Manager to Capital & Engineering Manager. Since production wrapped up at the factory Martin has held multiple production and project management roles in the construction and food industries.

Martin's role will be focused on the establishment of a wagon assembly facility at the redeveloped Hillside site. He will be working on all aspects of setting up production, from the recruitment of a new wagon assembly team to equipment, processes and logistics of the new operation.



## What can our neighbours expect?

There will be noise and dust generated by the demolition of the remaining buildings, which requires the use of large mechanical machinery such as excavators and concrete crushers. We will try to minimise the impact of this as much as possible using dust suppression cannons and sprinklers. Most of our work will take place during the day, but the nature and scale of these works means at times we may need to work overnight and at weekends.

When the demolition happens close to Hillside Road it will cause minor traffic disruption. We will have traffic

management in place if we need to close the footpath. Unfortunately, this will reduce the number of public parking spaces along Hillside Road for a short period.

Contractors Calder Stewart will be busy as construction of the new buildings gets underway. This construction activity will continue for at least the next year and a half, into 2024.

Looking ahead, there will be further minor traffic disruption on Hillside Road at times as this redevelopment work is carried out.

Sign up for Hillside future work email notifications and to receive our newsletter by emailing us at [contactus@kiwirail.co.nz](mailto:contactus@kiwirail.co.nz)

Thank you for your patience while we carry out this important work, which will rejuvenate this site.