

KAPITI LINE WORKS – TAKAPU ROAD

26 December 2025 to Monday 5 Jan 2026

Dear neighbour,

This Christmas we will be doing essential maintenance and renewal work on the Kapiti Line at Takapu Road. This work is an important part of keeping our Wellington Metro railway up-to-date and reliable.

What's happening?

- Full track replacement, including removing and replacing the old ballast (stoney material that goes under the tracks) and replacing the old wooden sleepers with concrete ones.

When?

- Work begins **Friday 26 December** and will continue through to **Monday 5 January 2026**.
- Day work only between the hours of 6.00am on Friday 26 December through to early Monday morning 5 January.

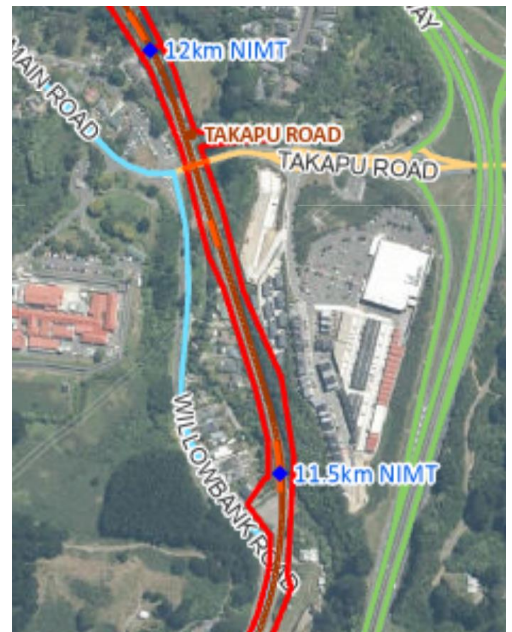
What you will see and hear

- Crew and work trains operating on the line around Takapu Road.
- Noise from excavation work, machinery, and from loading and shifting ballast.
- Extra trucks on Willowbank Road and Rosewell Road – transporting materials from the 11.5km site marked on the map.

We will do our best to keep our noise and disruption to a minimum. We apologise in advance for any inconvenience our work may cause.

Trains replaced by buses

Train services over Christmas and New Year from 26 December through to 12 January will be replaced with buses. This gives our people full and safe access to the lines to get some of the bigger jobs done with no trains running. If you are a regular commuter, thanks for your patience. We try to get as much maintenance done as possible over long weekends and holidays when there are less people needing to use public transport.



For more information about bus replacements visit metlink.co.nz/plan-ahead.

If you have any questions about the work, email us at contactus@kiwirail.co.nz

KiwiRail's Wellington Metro Team



www.kiwirail.co.nz | 0800 801 070

Wellington Railway Station, Bunny Street, Wellington 6011
Private Bag 39988, Lower Hutt 5045, New Zealand