

BELL STREET LEVEL CROSSING TO CLOSE

17 December 2025

Dear neighbour,

This summer KiwiRail will have crew working on the Bell Street level crossing. We will also be trenching through town alongside the railway line. This work is part of the Wairarapa Line safety upgrade ready for faster and more frequent trains from 2029.

What's happening?

- Bell Street level crossing will close permanently to traffic. Work begins on turning Bell Street into a pedestrian only level crossing.
- Trenching between Brandon Street and Featherston Station to install ducting for power cables.

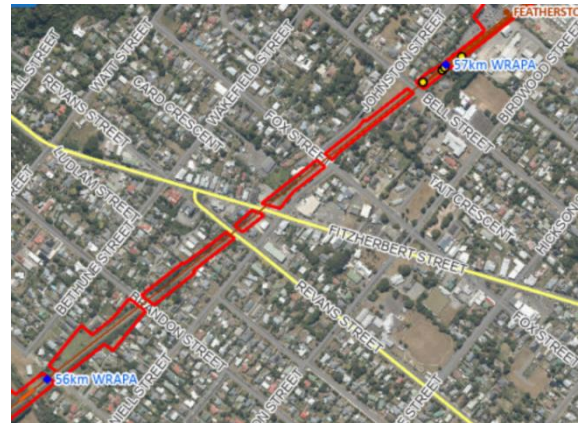
When?

- Bell Street level crossing will close to traffic, and work begins **17 December** through to **April 2026**.
- Trenching begins **Friday 26 December** and will continue through to **Monday 12 January 2026**.
- Day work between **6.00am** and **6.00pm**. There will be weekend and public holiday work so that the crew can complete the job before trains resume on Monday 12 January. After 12 January work on the Bell Street level crossing will mostly be on weekdays only.

What you will see and hear

- Crew members, trucks and machinery working at the Bell Street level crossing and alongside the railway line between Brandon Street and Featherston Station.
- Noise from excavation work and machinery.
- Frequent truck movements and traffic management in place as needed.
- Traffic detour at Bell Street.

We will do our best to keep our noise and disruption to a minimum. We apologise in advance for any inconvenience our work may cause.



Trains replaced by buses between 26 Dec and 12 Jan 2026

Passenger train services over Christmas and New Year from 26 December through to 12 January will be replaced with buses. This gives our people full and safe access to the lines to get some of these bigger jobs done with no trains running. If you are a regular commuter, thanks for your patience. We try to get as much maintenance done as possible over long weekends and holidays when there are less people needing to use public transport.

For more information about bus replacement visit metlink.co.nz/plan-ahead.

If you have any questions about the work, email us at contactus@kiwirail.co.nz

KiwiRail's Wellington Metro Team



www.kiwirail.co.nz | 0800 801 070

Wellington Railway Station, Bunny Street, Wellington 6011
Private Bag 39988, Lower Hutt 5045, New Zealand