

ELLERSLIE BRIDGE WORKS

December 2025

Dear neighbour,

KiwiRail will be undertaking work on the rail bridge behind Pohutukawa Avenue in Eilerslie from **Tuesday 30 December to Monday 12 January between the hours of 6am and 6pm.**

This work will be done during the day and Traffic Management will be in place throughout the duration of the work.

Thank you for your on-going patience as we continue to undertake maintenance and upgrade works on the rail tracks near your property.

Upcoming Dates

Tuesday 30 December – Monday 12 January

**Construction works and Traffic Management:
6am – 6pm**

What we are doing:

Teams will be carrying out re-sleeper works on the rail bridge behind Pohutukawa Avenue.

Teams will use a digger to lift the rails and take out the old sleepers, they will then install new sleepers and place the rail back. The tamper will then need to travel through this section to tamp everything into place.

Teams will complete this work between 6am-6pm.

How this affects you:

There will be noise from heavy machinery and vehicles moving around and along the rail corridor. There will be Traffic Management in place throughout the duration of the works. Please ensure you follow all relevant signage and personnel instructions.

Teams will need to access the rail corridor via Market Road so please be mindful of this when in the area.

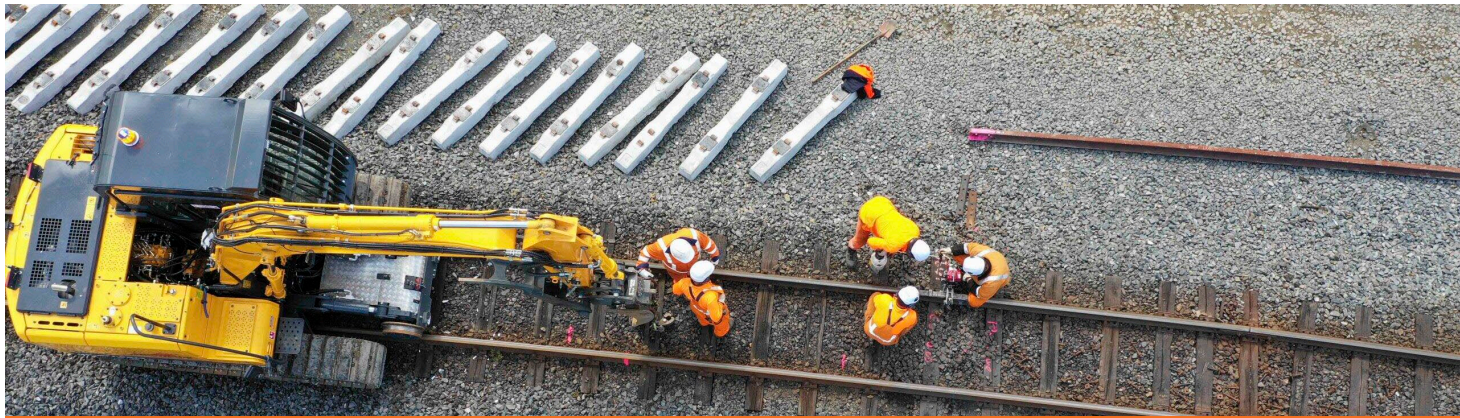
Our staff are mindful of our rail neighbours and will work hard to minimise any disturbance to get this essential work done as quickly and quietly as possible. However, despite their best efforts, this work may cause you some disturbance. We apologise for any inconvenience in relation to our work.

Please see map on the reverse to show where the work will be taking place.

Find out more

If you have any queries about this work, contact our Community Engagement Team via **contactus@kiwirail.co.nz** or **0800 801 070 ext 43042.**

To receive future work notifications by email, please email us at the above address with your details.



ELLERSLIE BRIDGE WORKS

December 2025

Worksite:

Large vehicles such as diggers and hi-rail vehicles will be required to operate during the day and will travel along the rail corridor from Market Road to access the work site.



Worksite



Access point