

TAKANINI LEVEL CROSSING WORKS AND ROAD CLOSURE

December 2025

Dear neighbour,

KiwiRail will be carry out essential maintenance work on the Manuroa Road level crossing from **Saturday 27 December to Saturday 3 January, between the hours of 6am and 6pm.**

There will be a 24/7 closure of the level crossing during this period. Traffic Management will be in place and detours will be clearly signposted.

Thank you for your on-going patience as we continue to undertake maintenance and upgrade works on the rail tracks near your property.

What we are doing:

Teams will be carrying out essential maintenance works on the rail network near your residence.

Teams will complete this work between 6am-6pm from Saturday 27 December to Saturday 3 January.

During this period, traffic management will be in place, and the level crossing will be closed 24/7 to both vehicles and pedestrians. Please ensure you follow all Traffic Management signage and personnel on site. While Manuroa Road will remain accessible to residents, crossing the railway line will not be possible during the closure.

How this affects you:

There will be noise from heavy machinery and vehicles moving around and along the rail corridor, as well as teams working in the area. We ask that you exercise caution during this period, as there will be an increased presence of machinery and trucks.

Our staff are mindful of our rail neighbours and will work hard to minimise any disturbance to get this essential work done as quickly and quietly as possible. However, despite their best efforts, this work may cause you some disturbance from machinery and vehicles moving on site. We apologise for any inconvenience in relation to our work.

Please see map on the reverse to show where the work will be taking place.

Upcoming Dates

Saturday 27 December to
Saturday 3 January

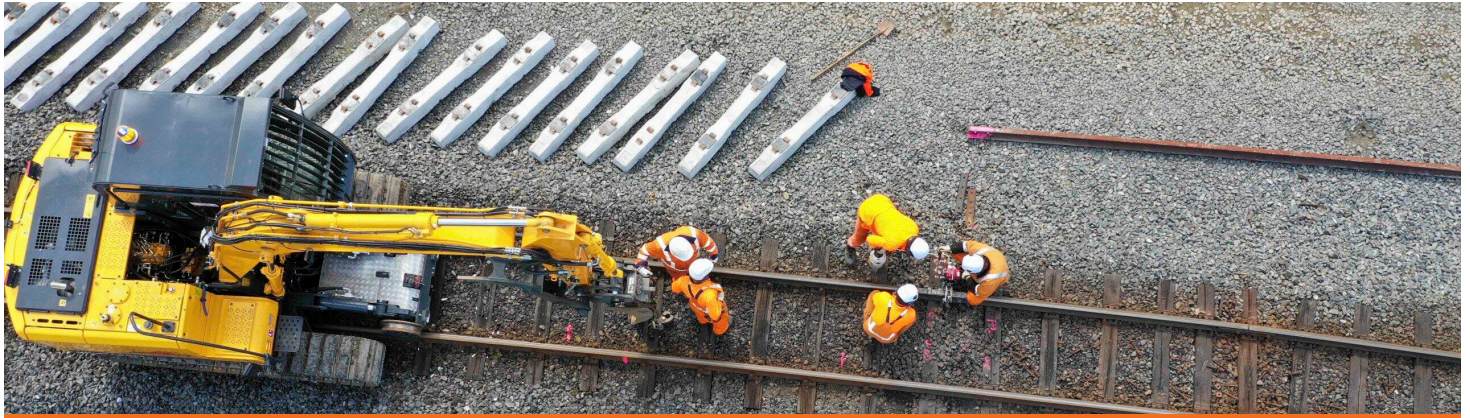
Construction works:
6am – 6pm

Full road closure:
24/7

Find out more

If you have any queries about this work, contact our Community Engagement Team via **contactus@kiwirail.co.nz** or **0800 801 070 ext 43042.**

To receive future work notifications by email, please email us at the above address with your details.



TAKANINI LEVEL CROSSING WORKS AND ROAD CLOSURE

December 2025

Worksite: Large vehicles such as diggers and hi-rail vehicles will be required to operate during the day.

