

ELLERSLIE BRIDGE WORKS

December 2025

Dear neighbour,

KiwiRail will be undertaking work on the rail bridge above Mitchelson Street in Ellerslie from **Saturday 27 December to Wednesday 31 December between the hours of 6am and 6pm.**

A full road closure will be in place 24/7 throughout the duration of the work for the section of Mitchelson Street under the rail bridge. While Mitchelson Street will remain accessible to residents, travelling under the rail bridge will not be possible. Detours will be clearly signposted.

Thank you for your on-going patience as we continue to undertake maintenance and upgrade works on the rail tracks near your property.

What we are doing:

Teams will be carrying out re-sleeper works on the rail bridge above Mitchelson Street from Saturday 27 December to Wednesday 31 December.

Teams will use a digger to lift the rails and take out the old sleepers, they will then install new sleepers and place the rail back. The tamper will then need to travel through this section to tamp everything into place.

How this affects you:

There will be noise from heavy machinery and vehicles moving around and along the rail corridor. There will be a 24/7 road closure of Mitchelson Street to pedestrians and vehicles throughout the duration of the works. Please ensure you follow all relevant Traffic Management signage and personnel instructions when travelling in the area.

Our staff are mindful of our rail neighbours and will work hard to minimise any disturbance to get this essential work done as quickly and quietly as possible. However, despite their best efforts, this work may cause you some disturbance. We apologise for any inconvenience in relation to the traffic detour and our work.

Please see map on the reverse to show where the work will be taking place.

Upcoming Dates

Saturday 27 December –
Wednesday 31 December

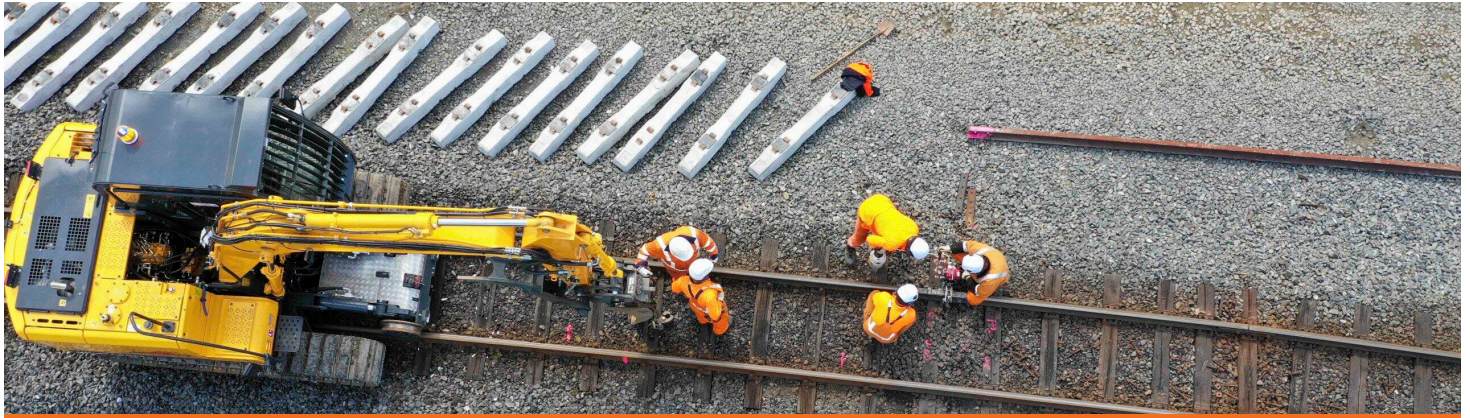
**Construction works:
6am – 6pm**

**Full road closure:
24/7**

Find out more

If you have any queries about this work, contact our Community Engagement Team via **contactus@kiwirail.co.nz** or **0800 801 070 ext 43042.**

To receive future work notifications by email, please email us at the above address with your details.



ELLERSLIE BRIDGE WORKS

December 2025

Worksite:

Large vehicles such as diggers and hi-rail vehicles will be required to operate during the day and will travel along the rail corridor to access the work site.



Thanks for your patience while we carry out this important work - The KiwiRail team.
contactus@kiwirail.co.nz or 0800 801 070 ext 43042

