

## NEW NORTH ROAD BRIDGE WORK

December 2025

Dear neighbour,

KiwiRail will be undertaking beam replacement work on the rail bridge above New North Road, Morningside from **Saturday 27 December to Wednesday 7 January** between the hours of 6am and 6pm.

There will be a **partial road closure in place throughout the duration of these works** with one lane always remaining open.

Thank you for your on-going patience as we continue to undertake maintenance and upgrade works on the rail tracks near your property.

---

### How this affects you:

There will be noise from heavy machinery and vehicles moving around and along the rail corridor.

Traffic Management will be in place, so please follow all signage and personnel on site.

Teams will need to access the rail corridor via Baldwin Avenue so please be mindful when in the area.

Our staff are mindful of our rail neighbours and will work hard to minimise any disturbance to get this essential work done as quickly and quietly as possible. However, despite their best efforts, this work may cause you some disturbance from machinery and vehicles moving on site. We apologise for any inconvenience in relation to the traffic detour and our work.

Please see map on the reverse to show where the work will be taking place.

### Upcoming Dates

**Saturday 27 December 2025 -  
Wednesday 7 January 2026**

6am - 6pm bridge works with partial road closure.

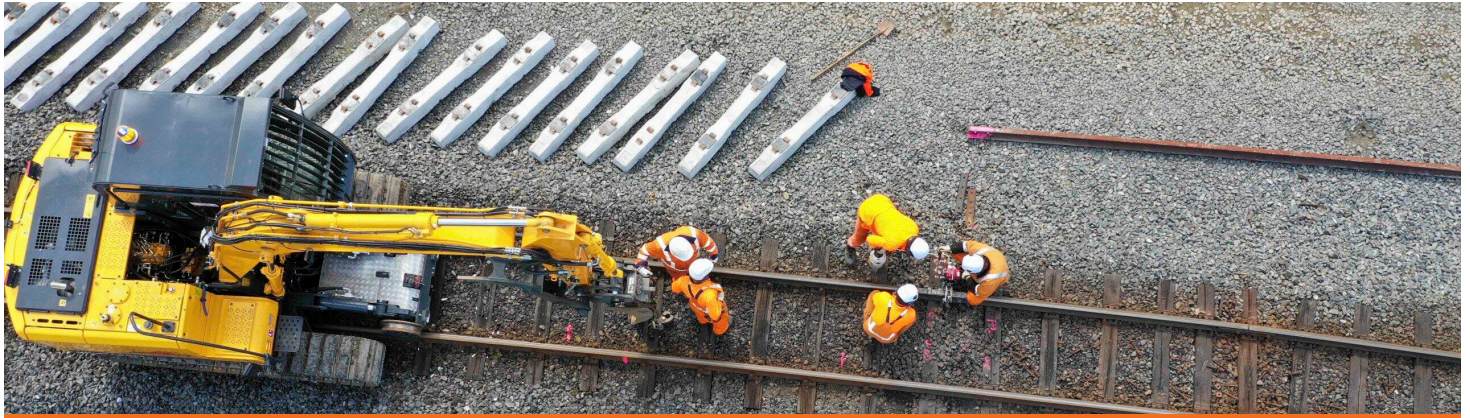
---

### Find out more

If you have any queries about this work, contact our Community Engagement Team via **contactus@kiwirail.co.nz** or **0800 801 070 ext 43042**.

To receive future work notifications by email, please email us at the above address with your details.





NEW NORTH ROAD BRIDGE WORK

December 2025

**Worksite:**

Large vehicles will be required to operate during the day and will travel along the rail corridor from Baldwin Avenue to access the work site.

