

ST JUDE STREET – LEVEL CROSSING UPGRADE

December 2025

Dear neighbour,

KiwiRail will be upgrading the level crossing on St Jude Street, Avondale. **Work is scheduled to begin at 6:00 am on Saturday 10 January, and continue through to 6:00 pm on Tuesday 20 January. Teams will work 24/7 during this time.**

During this period, Traffic Management will be in place, and the level crossing will be closed to both vehicles and pedestrians. Detours will be clearly signposted; please ensure you follow signage and personnel on site. While St Jude Street will remain accessible to residents, crossing the railway line will not be possible during the closure.

We ask that you exercise caution in the area, as there will be an increased presence of machinery and trucks.

Teams will access the rail corridor at St Jude Street level crossing and via rail land off New North Road by Pak'n'Save Mount Albert.

Our staff and contractors are mindful of our rail neighbours and will work to minimise disruption. However, overnight destressing works are required due to cooler temperature conditions, and this activity will be noisy. We apologise in advance for any disturbance and appreciate your patience as we carry out this essential upgrade.

Upcoming Dates

24/7 works and level crossing closure:
Saturday 10 January –

Tuesday 20 January

Find out more

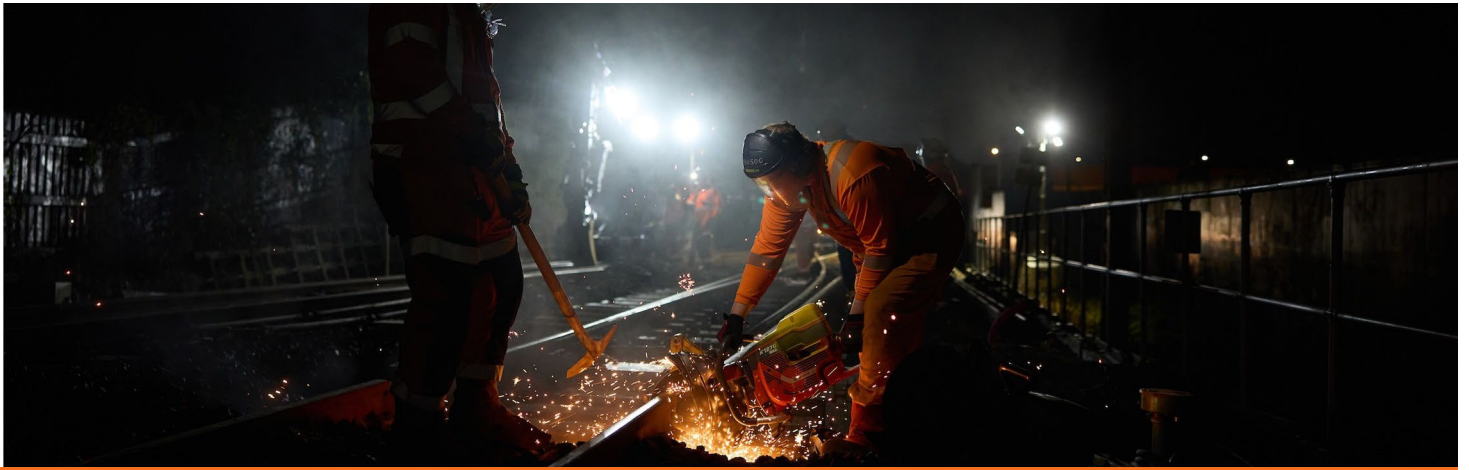
If you have any questions about our work, contact our Community Engagement Team via **contactus@kiwirail.co.nz** or **0800 801 070 ext 43042**.



Detour shown with arrows

Thanks for your patience while we carry out this important work - The KiwiRail team.
contactus@kiwirail.co.nz or **0800 801 070 ext 43042**

KiwiRail 



ST JUDE STREET – LEVEL CROSSING UPGRADE

December 2025