

PAPAKURA BRIDGE WORKS

December 2025

Dear neighbour,

KiwiRail will be undertaking work on the rail bridge above Subway Road in Papakura from **Wednesday 31 December to Sunday 4 January between the hours of 6am and 6pm.**

A full daytime road closure will be in place on Subway Road throughout the duration of the works. The detour will be clearly signposted via Clevedon Road.

Thank you for your on-going patience as we continue to undertake maintenance and upgrade works on the rail tracks near your property.

What we are doing:

Teams will be carrying out re-sleeper works on the rail bridge above Subway Road.

Teams will use a digger to lift the rails and take out the old sleepers, they will then install new sleepers and place the rail back. The tamper will then need to travel through this section to tamp everything into place.

How this affects you:

There will be noise from heavy machinery and vehicles moving around and along the rail corridor. There will also be a full daytime road closure on Subway Road throughout the duration of works, so please ensure you follow all Traffic Management signage and personnel regarding detours.

Teams will need to access the rail corridor via Porchester Road so please be mindful of increased vehicle movements during working hours.

Our staff are mindful of our rail neighbours and will work hard to minimise any disturbance to get this essential work done as quickly and quietly as possible. However, despite their best efforts, this work may cause you some disturbance from machinery and vehicles moving on site. We apologise for any inconvenience caused by our work.

Please see map on the reverse to show where the work will be taking place.

Upcoming Dates

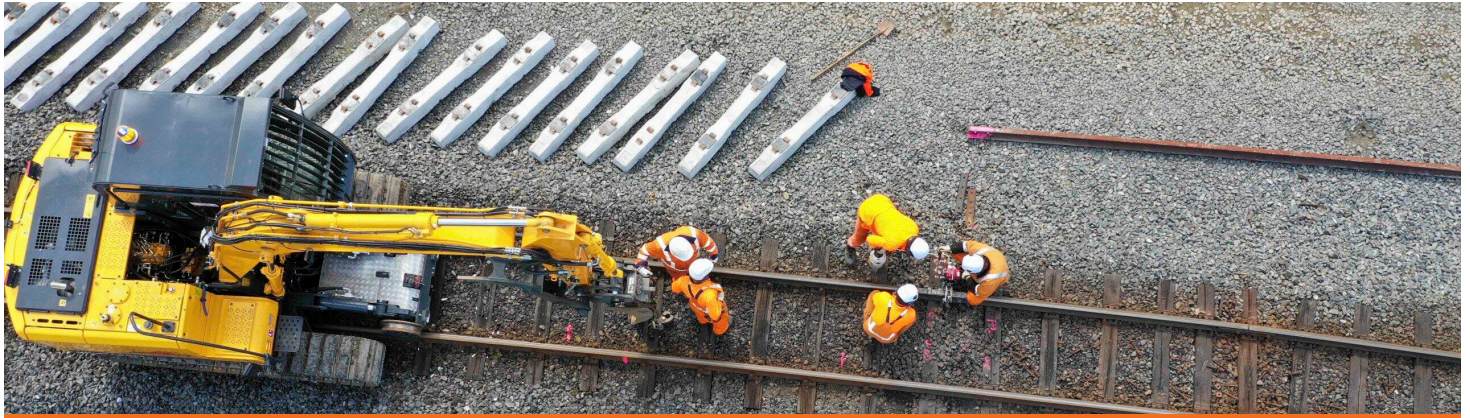
Wednesday 31 December –
Sunday 4 January

**Construction works and road closure:
6am – 6pm**

Find out more

If you have any queries about this work, contact our Community Engagement Team via **contactus@kiwirail.co.nz** or **0800 801 070 ext 43042.**

To receive future work notifications by email, please email us at the above address with your details.

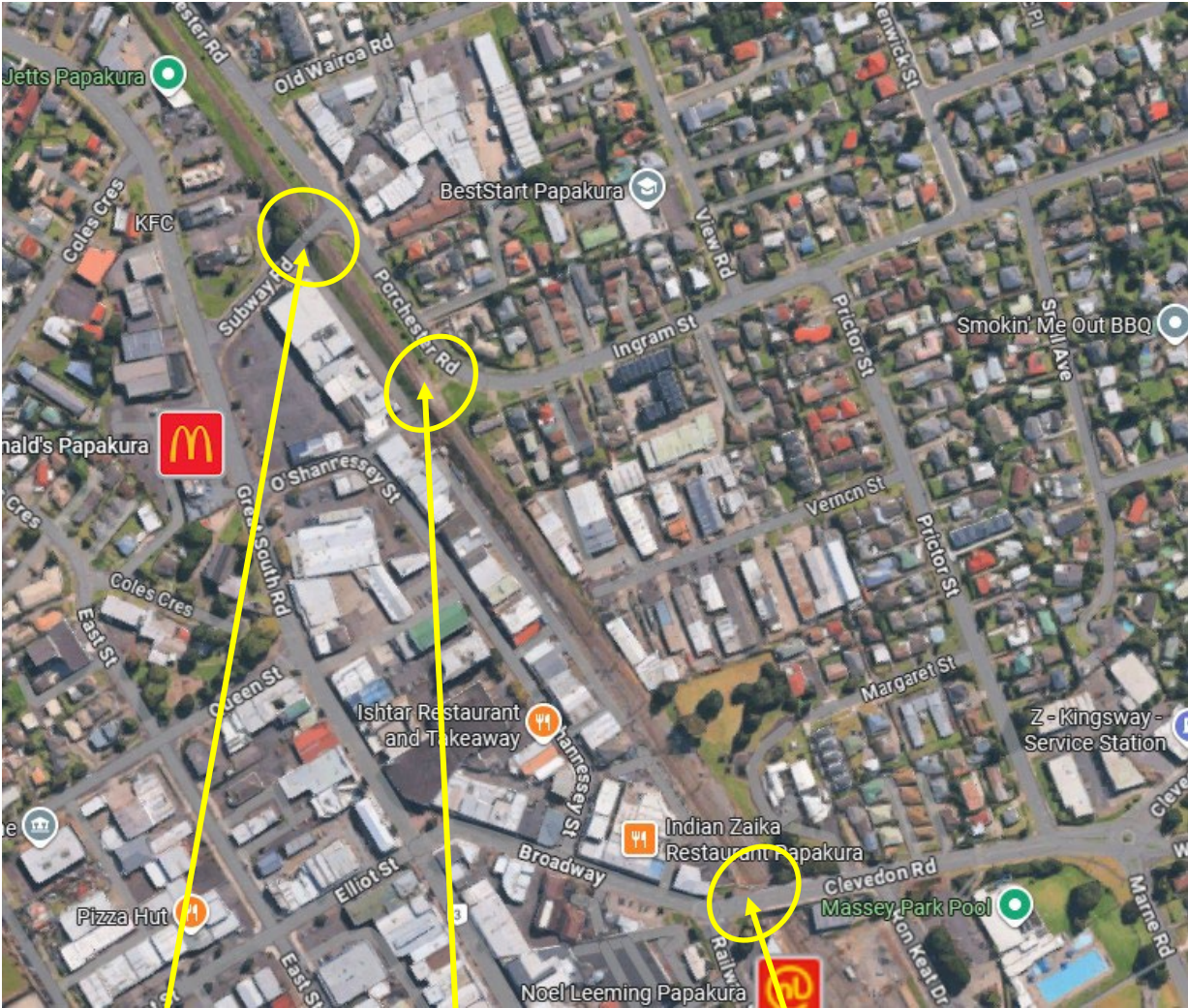


PAPAKURA BRIDGE WORKS

December 2025

Worksite:

Large vehicles such as diggers and hi-rail vehicles will be required to operate during the day and will travel along the rail corridor from Porchester Street to access the work site.



Worksite

Access point

Alternative access over the rail corridor