

SUTTON ROAD LEVEL CROSSING WORKS

December 2025

Dear neighbour,

KiwiRail will be undertaking work on the Sutton Road level crossing, Drury. **Work is scheduled to begin at 6am Sunday 4 January and complete by 6pm Thursday 15 January.**

During this period, this level crossing will have a full road closure in place to both vehicles and pedestrians.

Detours will be clearly signposted; please ensure you follow the signage.

Our staff and contractors are mindful of our rail neighbours and will work to minimise disruption where possible. We apologise in advance for any disturbance and appreciate your patience as we carry out this essential upgrade.

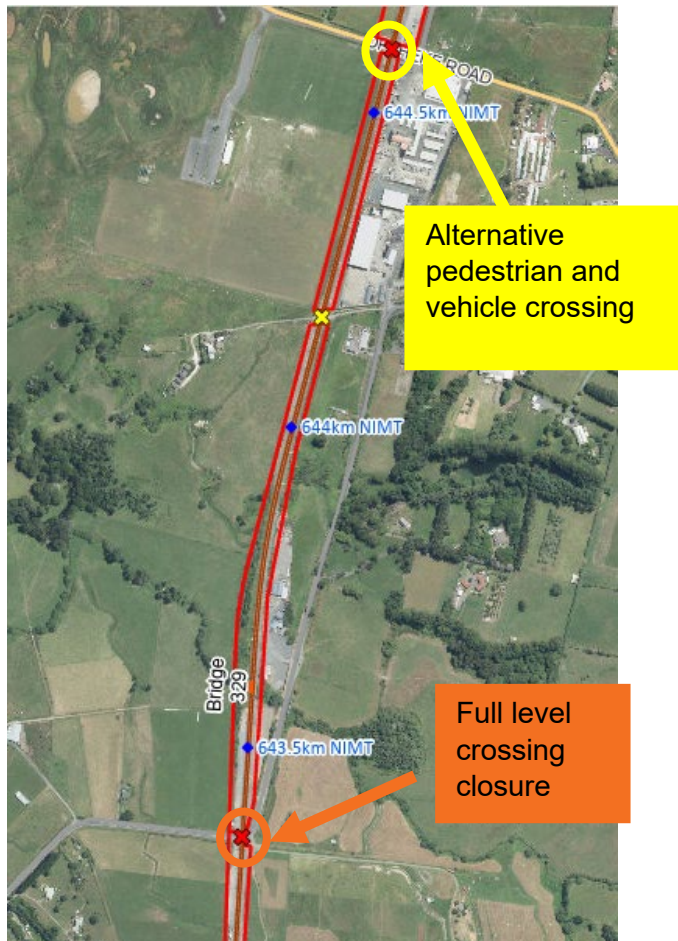
Upcoming Dates

4 January – 15 January:

24/7 works and full road closure

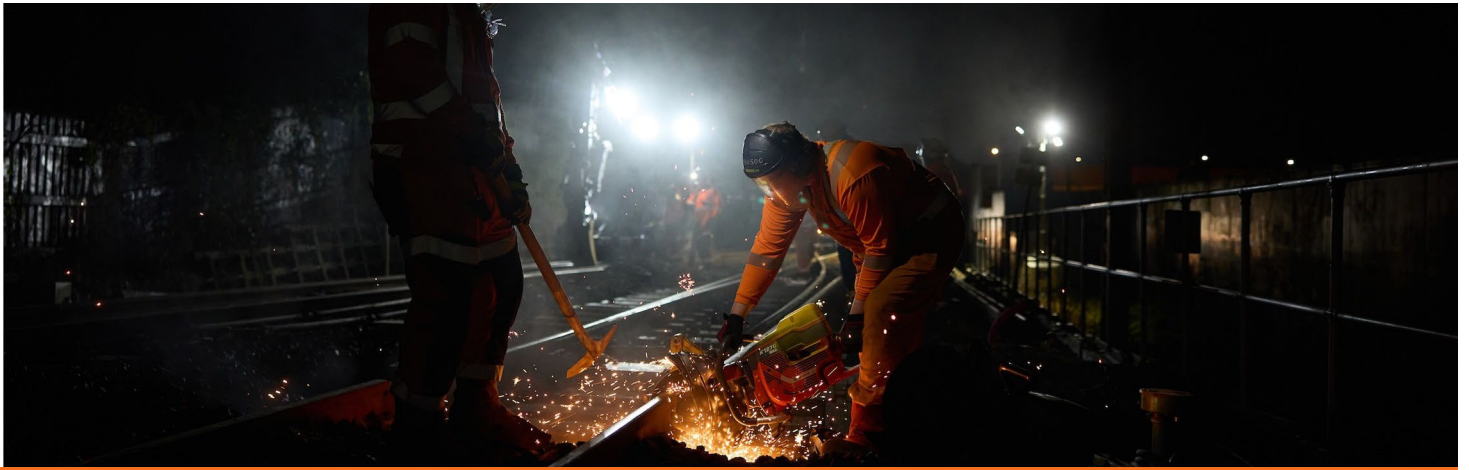
Find out more

If you have any questions about our work, contact our Community Engagement Team via contactus@kiwirail.co.nz or 0800 801 070 ext 43042.



Thanks for your patience while we carry out this important work - The KiwiRail team.
contactus@kiwirail.co.nz or 0800 801 070 ext 43042

KiwiRail 



SUTTON ROAD LEVEL CROSSING WORKS

December 2025