

TITIRANGI ROAD BRIDGE WORK & ROAD CLOSURE

December 2025

Dear neighbour,

KiwiRail will be undertaking work on the rail bridge above Tirirangi Road in New Lynn from **Tuesday 6 January to Saturday 17 January** between the hours of 6am and 6pm.

There will be a **partial road closure in place throughout the duration**, with a **full road closure in place 24/7 from 6am 8 January to 6pm 10 January**.

Thank you for your on-going patience as we continue to undertake maintenance and upgrade works on the rail tracks near your property.

What we are doing:

Teams will be carrying out re-sleeper works on the rail bridge above Titirangi Road.

Teams will use a digger to lift the rails and take out the old sleepers, they will then install new sleepers and place the rail back. The tamper will then need to travel through this section to tamp everything into place.

How this affects you:

There will be noise from heavy machinery and vehicles moving around and along the rail corridor. Please ensure that you follow all Traffic Management signage and personnel.

Teams will need to access the rail corridor via Fruitvale Road level crossing so please be mindful of this when in the area.

Our staff are mindful of our rail neighbours and will work hard to minimise any disturbance to get this essential work done as quickly and quietly as possible. However, despite their best efforts, this work may cause you some disturbance from machinery and vehicles moving on site. We apologise for any inconvenience in relation to the traffic detour and our work.

Please see map on the reverse to show where the work will be taking place.

Upcoming Dates

Tuesday 6 January – Saturday 17 January.

6am-6pm bridge works with partial road closure

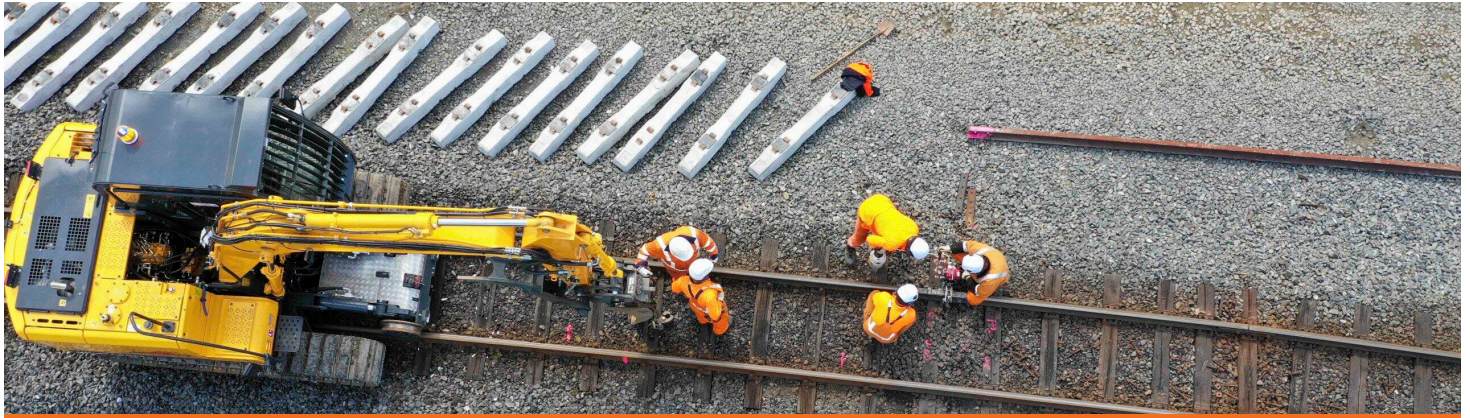
6am Thursday 8 January – 6pm Saturday 10 January

24/7 full road closure

Find out more

If you have any queries about this work, contact our Community Engagement Team via **contactus@kiwirail.co.nz** or **0800 801 070 ext 43042**.

To receive future work notifications by email, please email us at the above address with your details.



TITIRANGI ROAD BRIDGE WORK & ROAD CLOSURE

December 2025

Worksite:

Large vehicles such as diggers and hi-rail vehicles will be required to operate during the day and will travel along the rail corridor from Fruitvale Road to access the work site.

