

TRENTHAM TO UPPER HUTT DUPLICATION

UPPER HUTT CITY COUNCIL
26 JULY 2019



**A MODERN RELIABLE, RESILIENT
RAIL NETWORK FOR THE
WELLINGTON
REGION**

A BETTER RAIL SERVICE FOR THE HUTT VALLEY

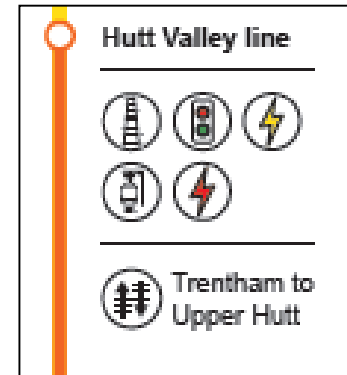
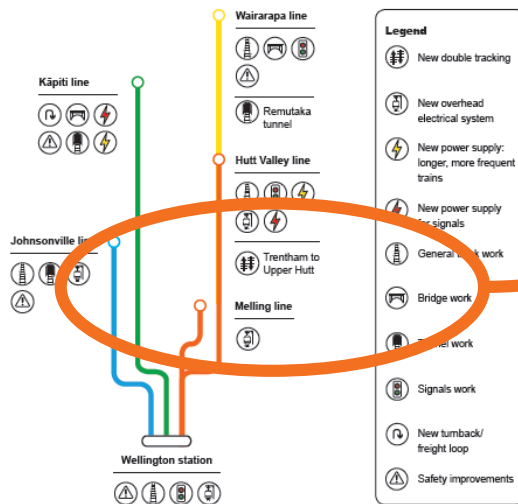




NETWORK WIDE IMPROVEMENTS

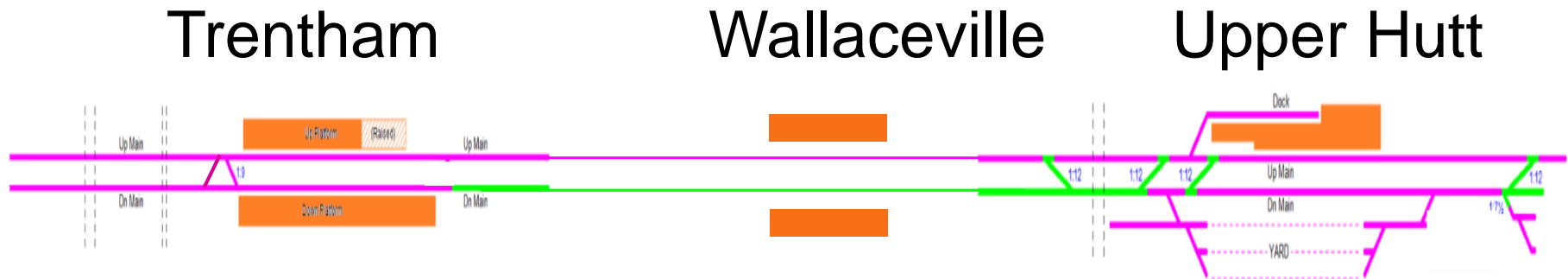
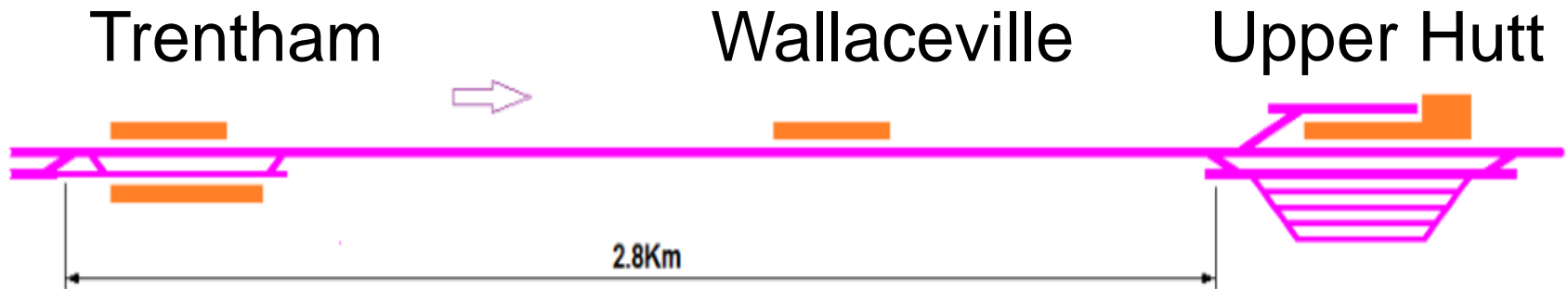
We're investing \$300m to build you a more modern, reliable and resilient rail network.

Thanks for your patience.





Existing and proposed track layout





T2UH: 2.5KM OF NEW TRACK





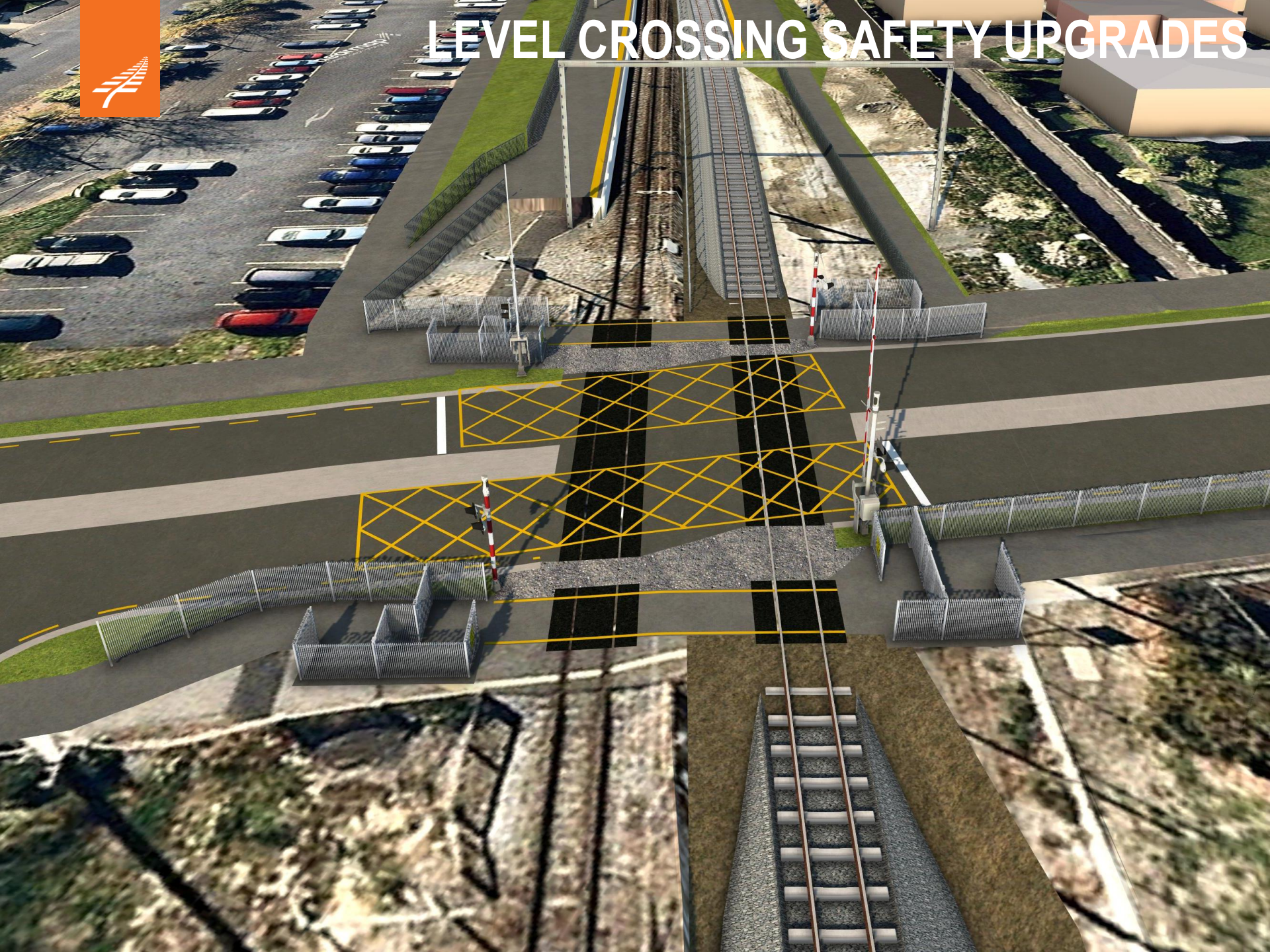
150 NEW TRACTION POLES

LEVEL CROSSING SAFETY UPGRADES





LEVEL CROSSING SAFETY UPGRADES



NEW PLATFORMS



NEW PLATFORMS





WHAT IS DIFFERENT ABOUT THIS PROJECT?







KiwiRail 





**LOOK
← FOR →
TRAINS**

**WORK UNDERWAY
WITH COUNCIL
OFFICERS ON COMMON
ISSUES INCLUDING
SAFETY, ENVIRONMENT
AND CORRIDOR
INFRASTRUCTURE**



COMMUNITY ENGAGEMENT
UNDERWAY WITH RAIL
CORRIDOR NEIGHBOURS



**BUILDING
COMMUNITY
ASSETS AND SKILLS**



MINIMISING
DISRUPTION TO
PASSENGERS

Questions?

**Stronger Connections.
Better New Zealand.**
